



# 2004 Assessment Summary

---

Mounds View Public Schools



# Assessment Findings

---

- 2004 Performance in Mounds View schools remains above national and state performance in both reading and math.
- Nearly 60% of Mounds View students perform in the top quartile compared to national norms in both reading and math.
- Growth indicators continue to be strong in math at both elementary and middle grades.
  - This includes high percent of normative growth made, and greater than 50% meeting or exceeding normative growth.
- Reading performance shows greater than expected growth in grade 3-6 and 8 for general education students.
- District indicators of school performance must account for the interaction among:
  - Overall student proficiency,
  - Percent of normative growth norms (PNG), and
  - Percent of students making normative growth targets.



# Annual Spring Assessment: NWEA Measure

---

- *Key Messages* Reading
- NWEA as a measure of student proficiency provides normative comparisons based on:
  - Level of attainment, **and**
  - Growth.
- District-wide nearly 55% of the student body performs in the top quartile compared to national norms in reading proficiency.
- Mounds View Students relative standing based on rank would be approximately at the 79<sup>th</sup> to 80<sup>th</sup> percentile nationally.
- Elementary reading scores on the state MCA are significantly higher than state average and increased compared to 2003.

# *NWEA Key Messages continued*

## *Reading...*

- Elementary reading scores increased slightly between 2003 and 2004 on the district's annual NWEA exam.
  - Except at grade 3 where performance remained the same.
- Although maintaining high overall performance, middle school median NWEA tests scores do show a decrease.
- Overall, our district indicator for growth is displayed using **two methods** & does indicate a deceleration in student reading growth in 2004.
  - Percent of normative growth, and
  - Percent of students making a year's growth in one year's time.
- This observed deceleration in reading growth will require additional investigation and may be related to past performance **and** the range of tests available.



## *NWEA Key Messages Math.*

---

- District-wide nearly 58% of the student body performs in the top quartile compared to national norms of math proficiency.
- Mounds View Students relative standing based on rank would be approximately at the 80<sup>th</sup> percentile nationally.
- Elementary scores increased at every grade between 2003 and 2004.
  - Except at grade 3, where there was a slight decrease in RIT performance.



# NWEA Math Key Messages continued...

---

- In contrast to reading, middle school math performance is a relative strength.
  - Scores remained stable or increased, except for a slight decrease at grade 6.
- Student growth as a measure of our district's two indicators described earlier (PNG and Percent making a year's growth) are nearly identical to 2003 performance at both the elementary and middle school level.

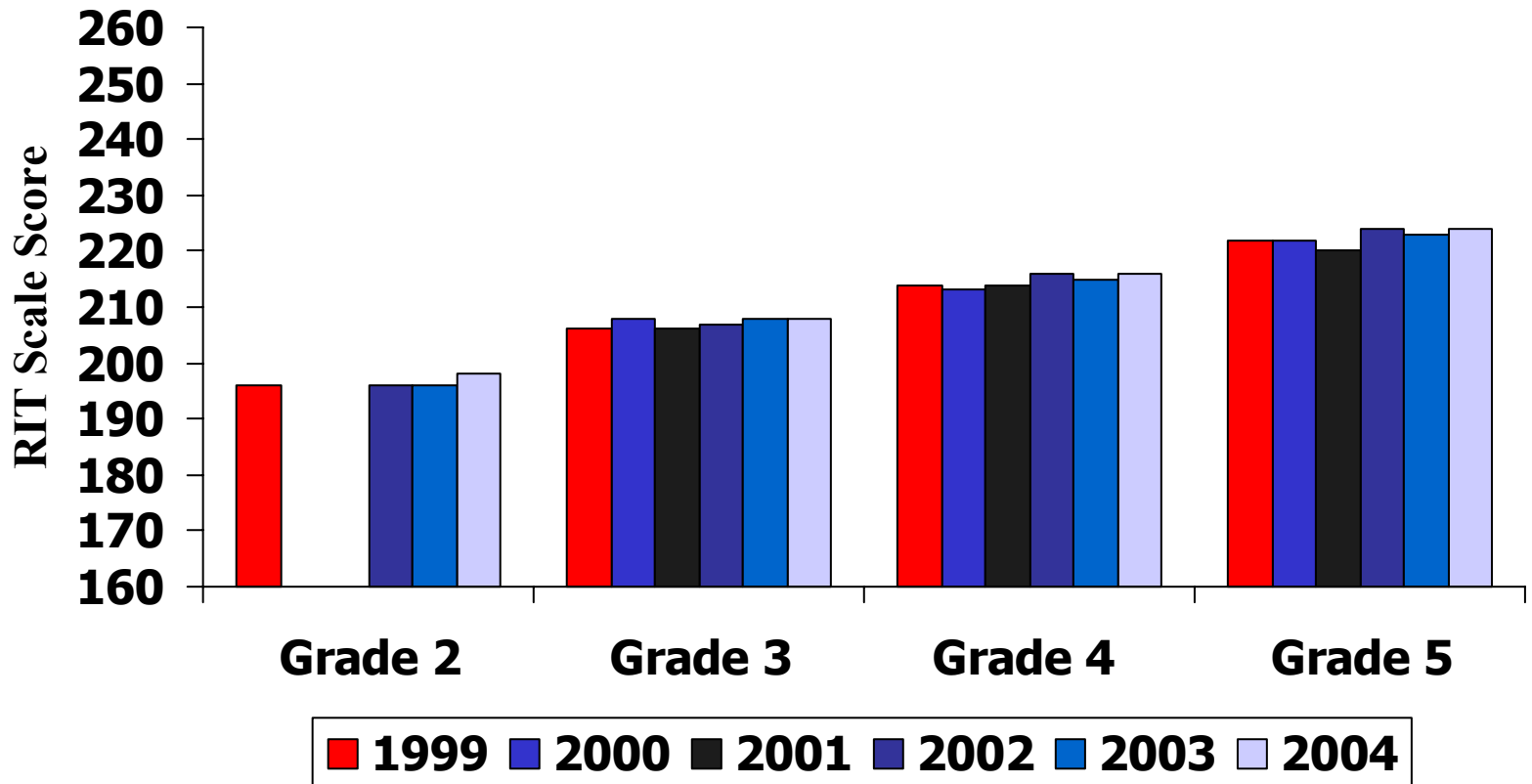


# 2004 Assessment Summary

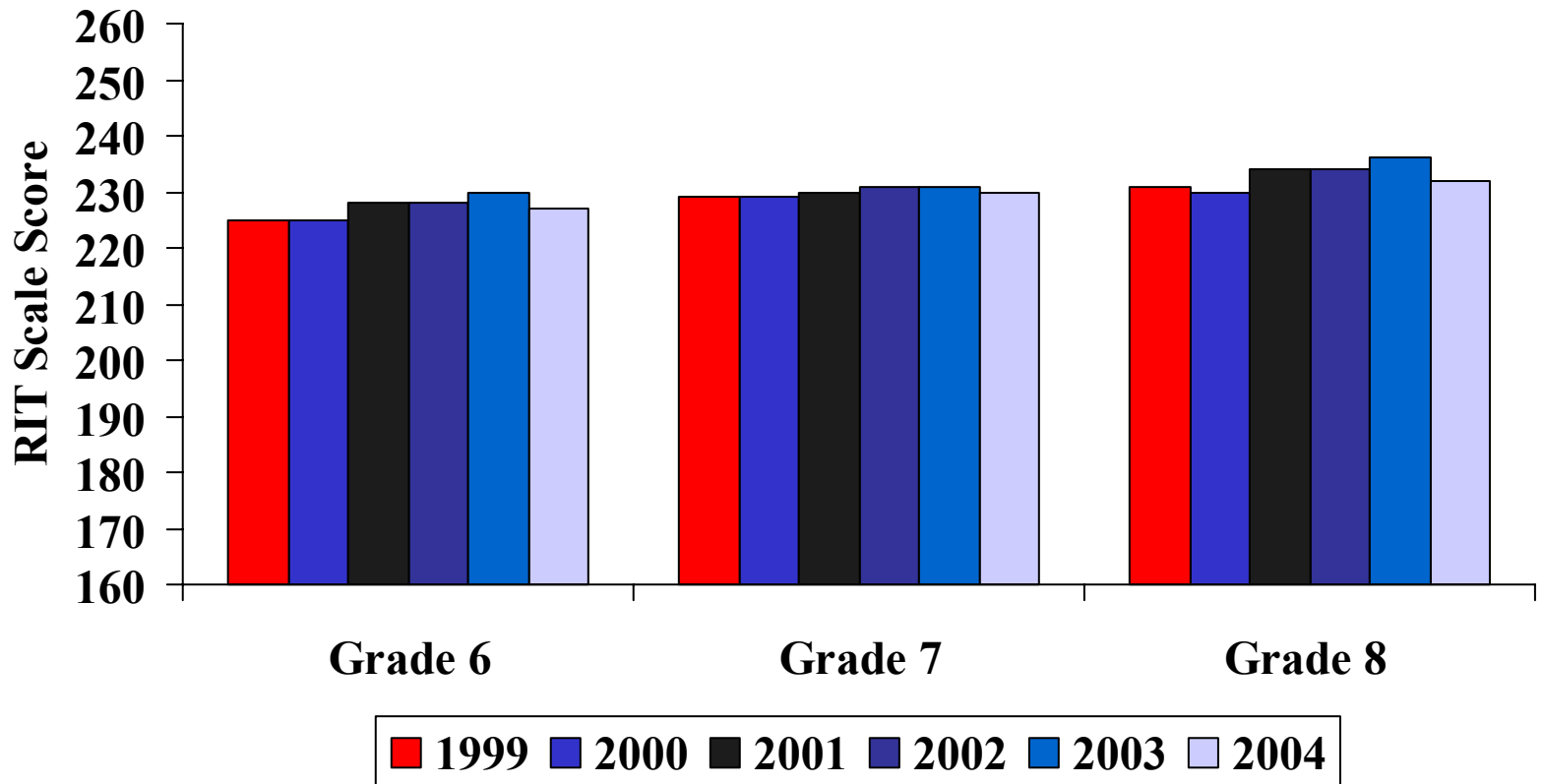
---

- 2004 Performance in Mounds View schools remains above national and state performance in both reading and math.
- Growth indicators continue to be strong in math at both elementary and middle grades. This includes high percent of normative growth made and greater than 50% meeting or exceeding normative growth.
- Reading performance shows greater than expected growth in grade 3-6 and 8 for general education students.
- Examination of NCLB sub-categories will follow at site level.
- High School MCA Gr. 10 Reading and Gr. 11 Math will arrive mid-August.
- State AYP reports will be released late August.
- Site level performance, student level analysis, and cohort analyses will continue to have an ongoing emphasis throughout the district.

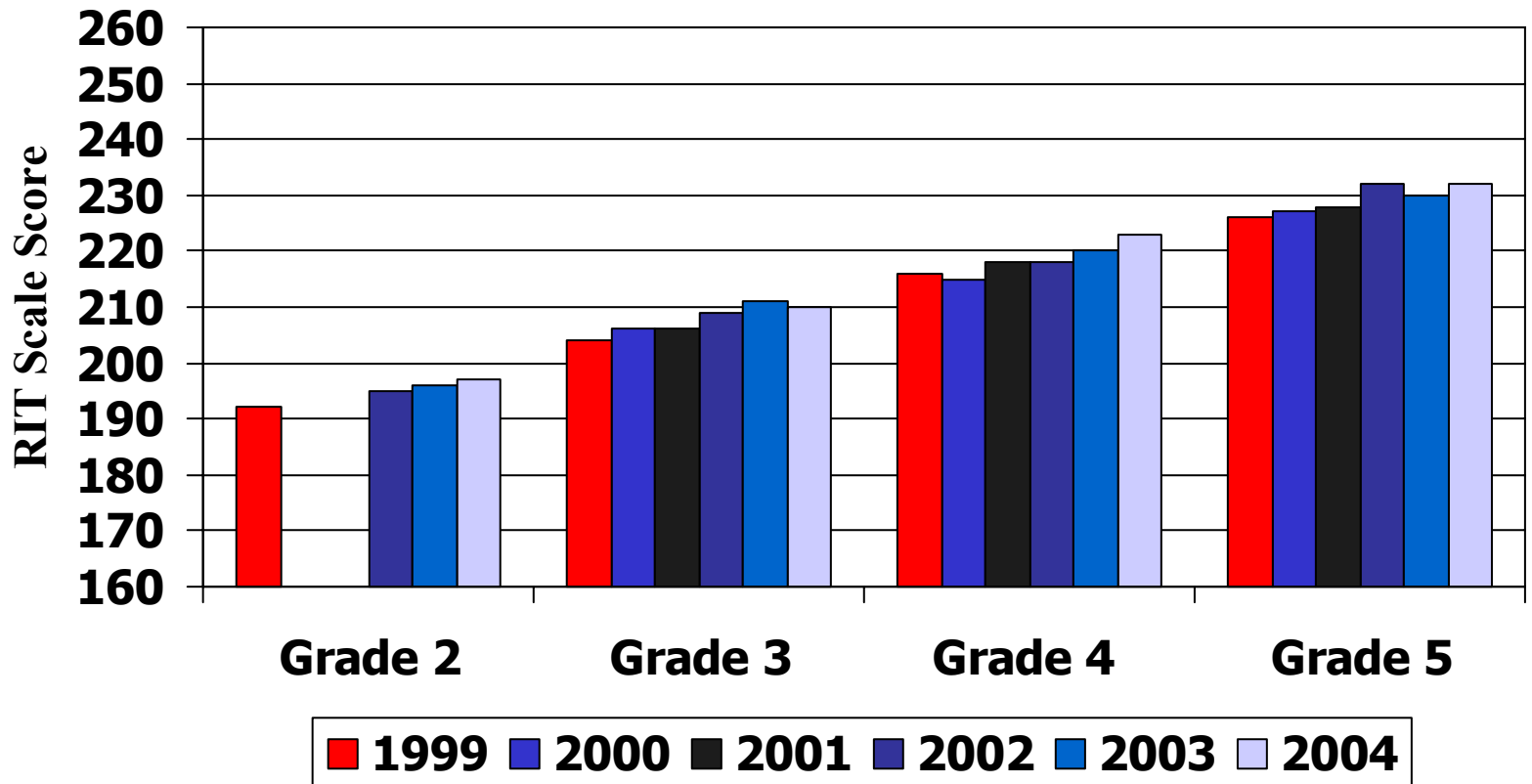
# District 621- Elementary NWEA Median Reading Scores by year



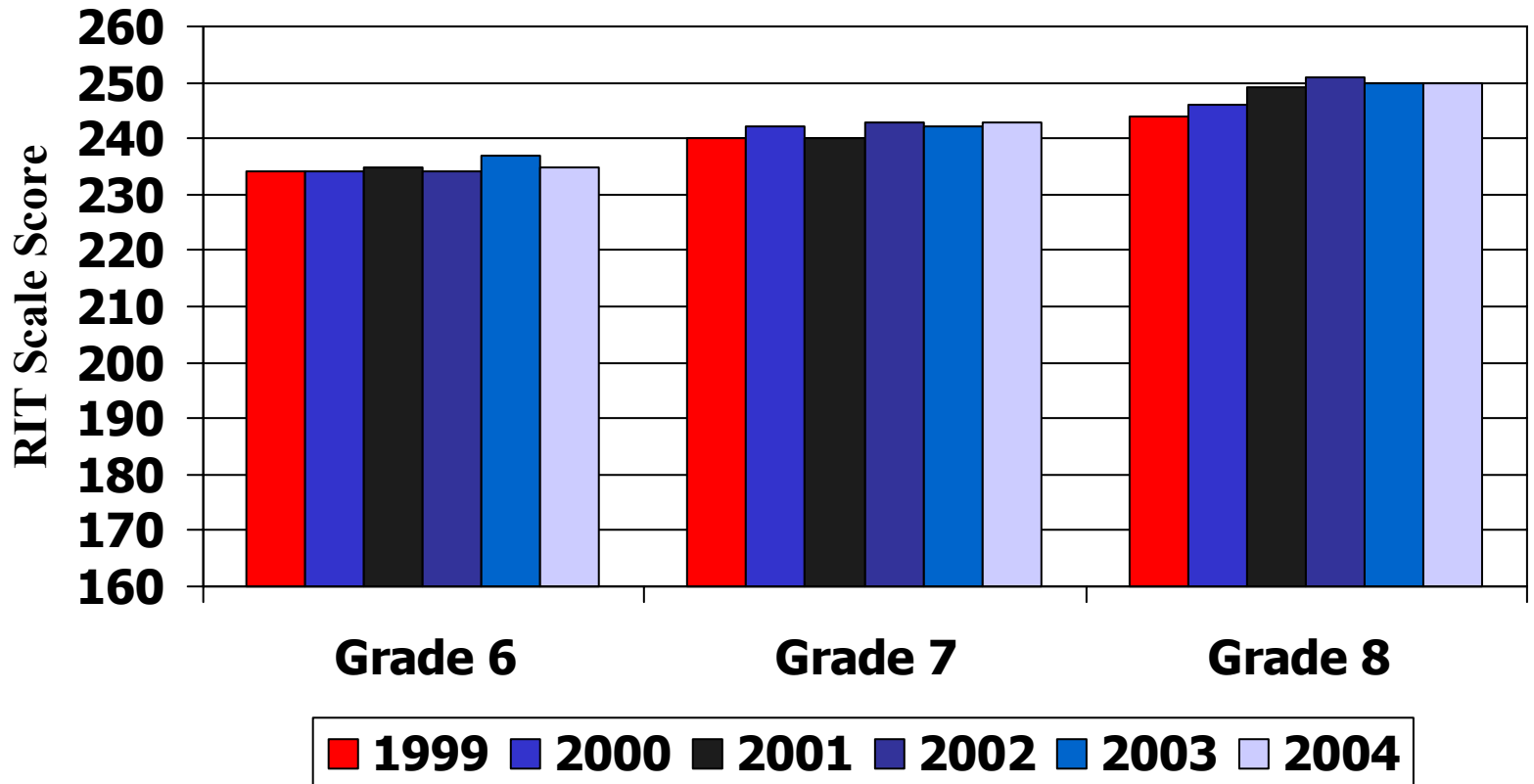
# District 621- Middle School NWEA Median Reading Scores by year



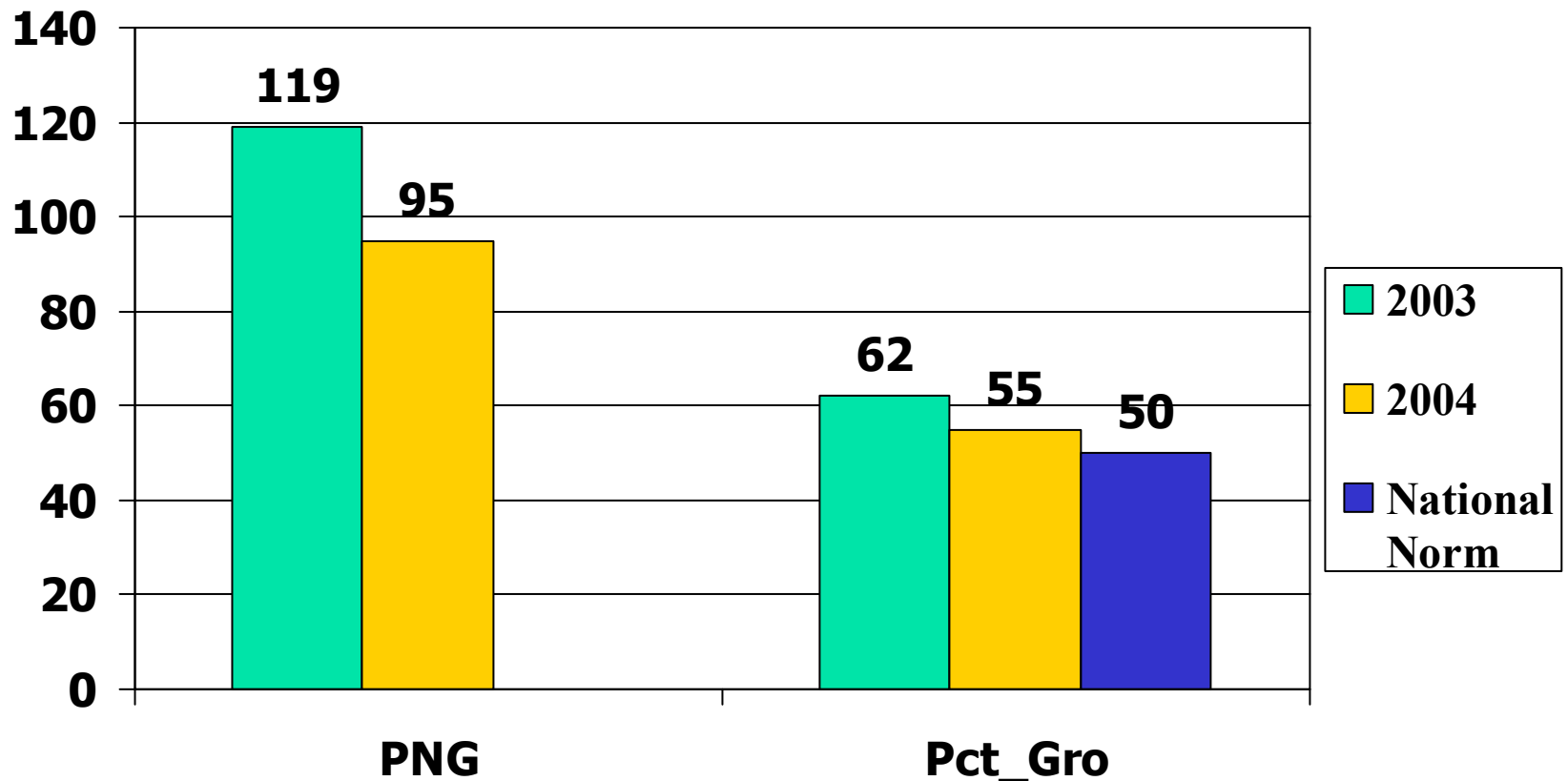
# District 621- Elementary NWEA Median Math Scores by year



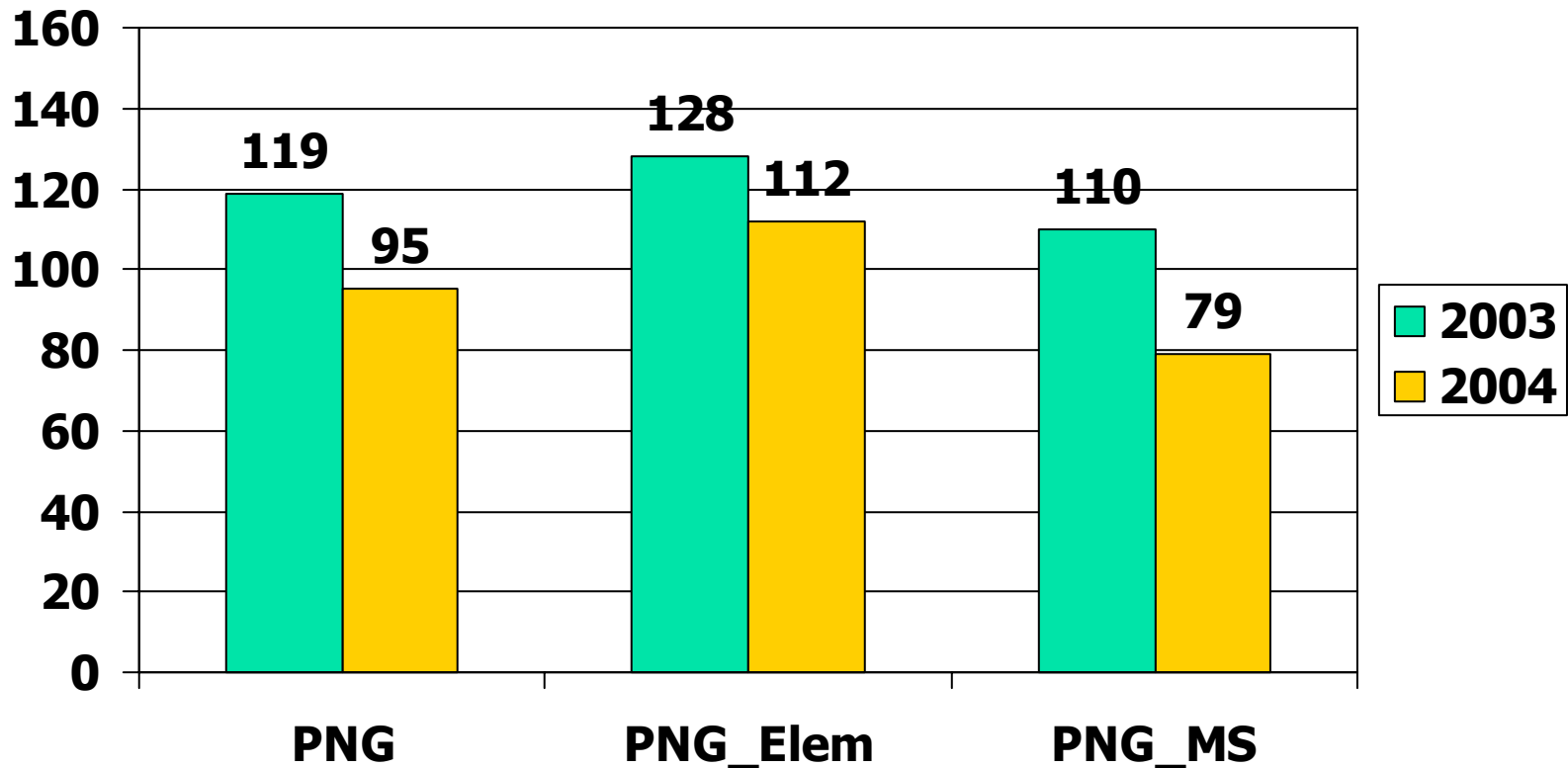
# District 621- Middle School NWEA Median Math Scores by year



# District Indicator of Reading Growth: NWEA Measure

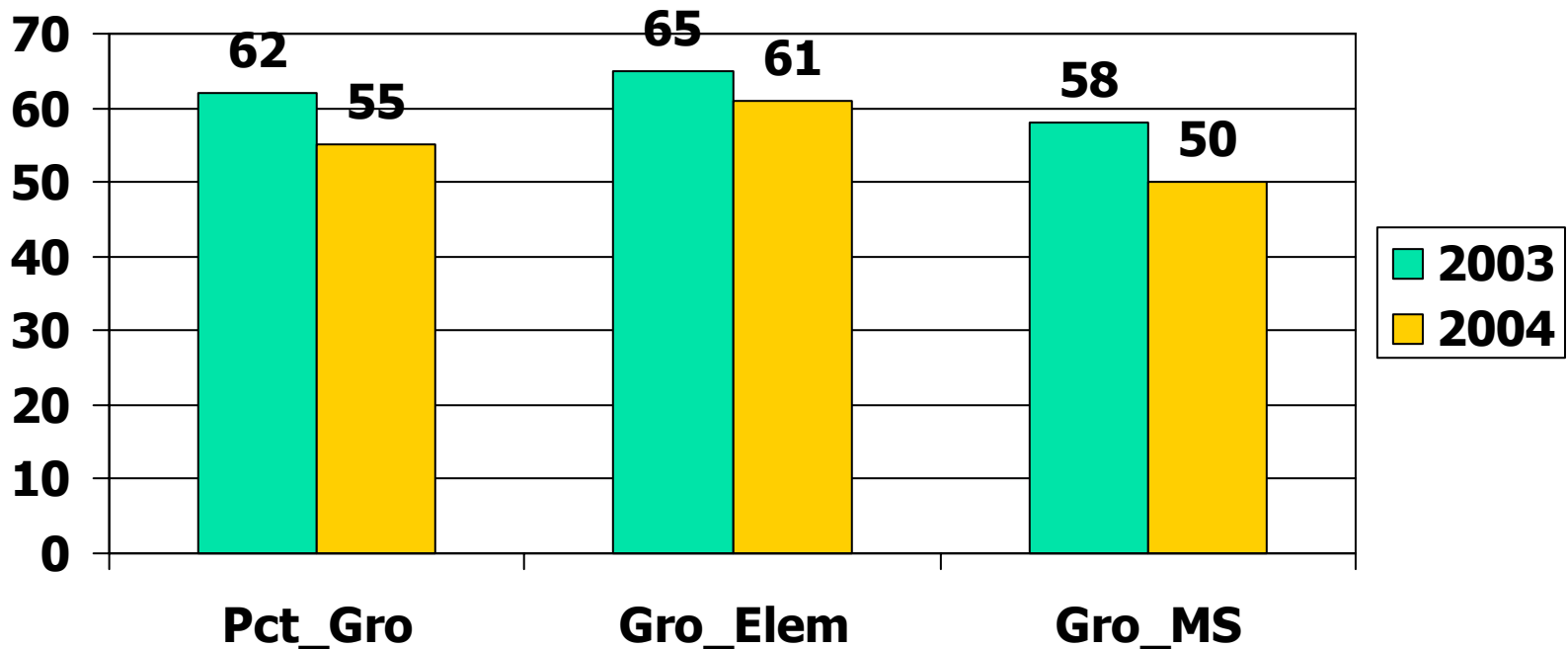


# District Indicator of Reading Growth: By Grade Level

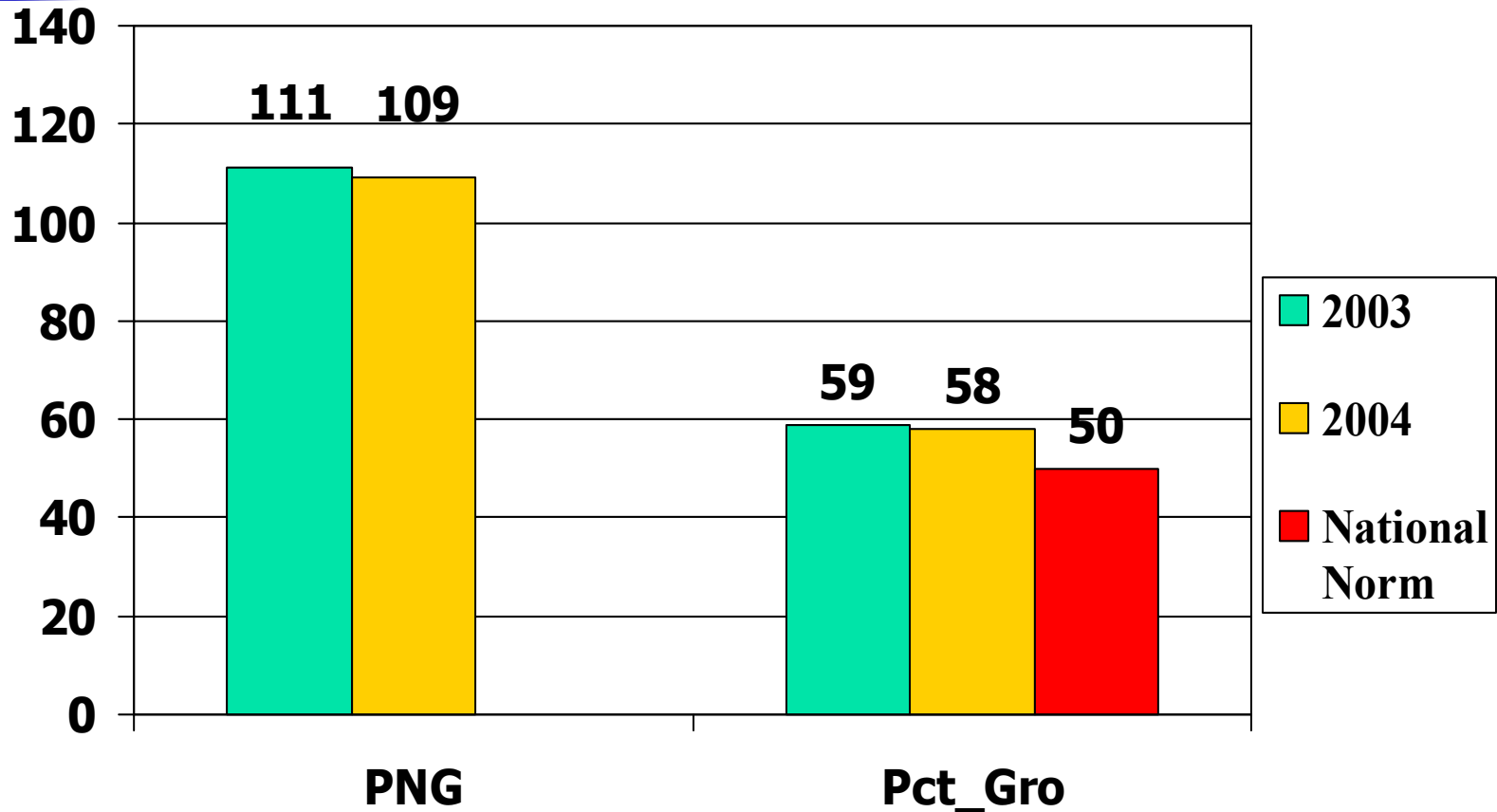


# District Indicator of Reading Growth: By Grade Level

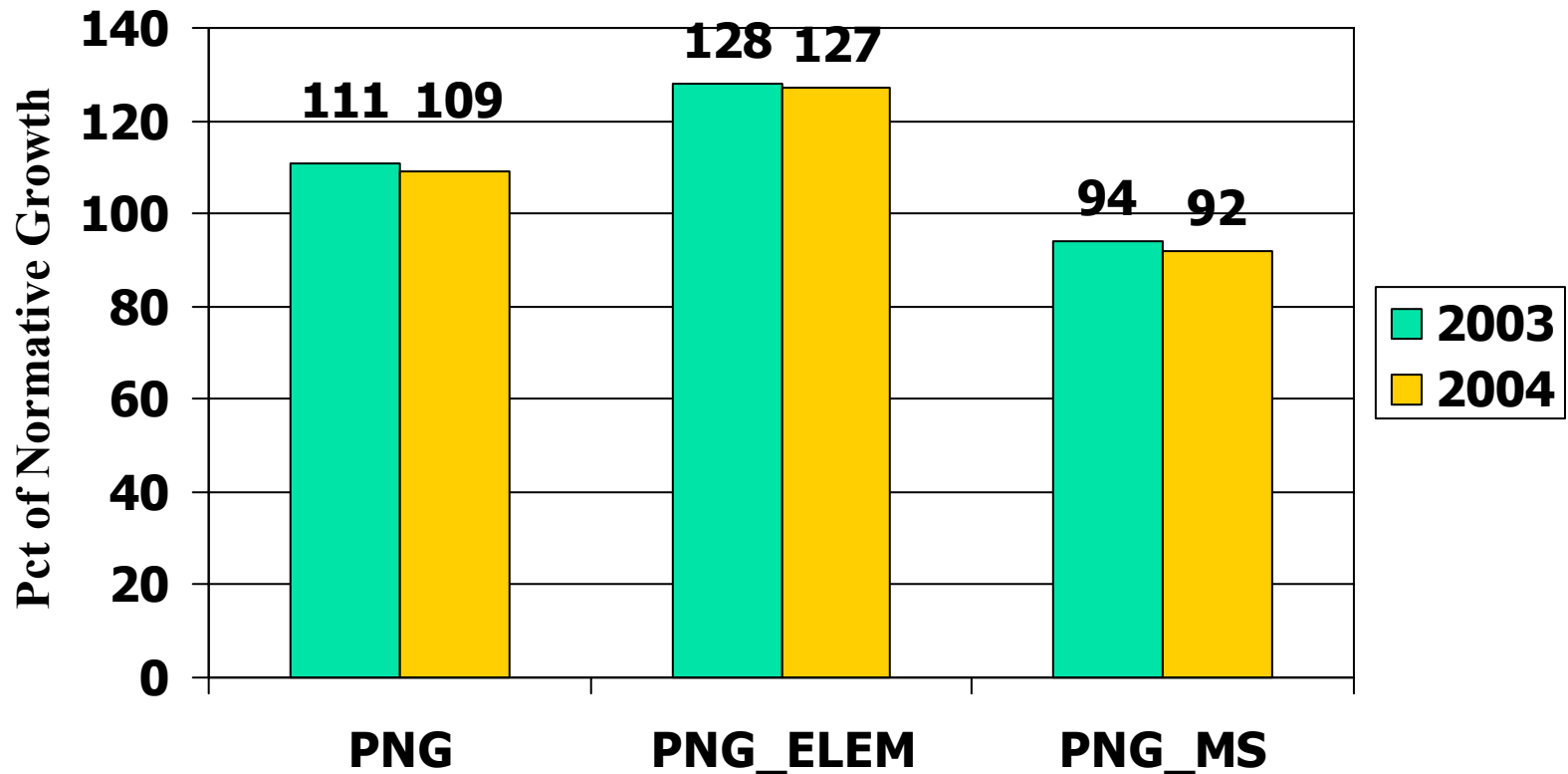
National Norm 50% Growth



# District Indicator of Math Growth: NWEA Measure



# District Indicator of Math Growth: By Grade Level



# District Indicator of Math Growth: By Grade Level

**National Norm 50% Growth**

