

Mounds View State Assessment Result 2007-2008

State Data includes:
MCA-II, AYP, GRAD

08-09 District Achievement Goals

School Board Presentation
August 12, 2008



State Assessments: MCA-II

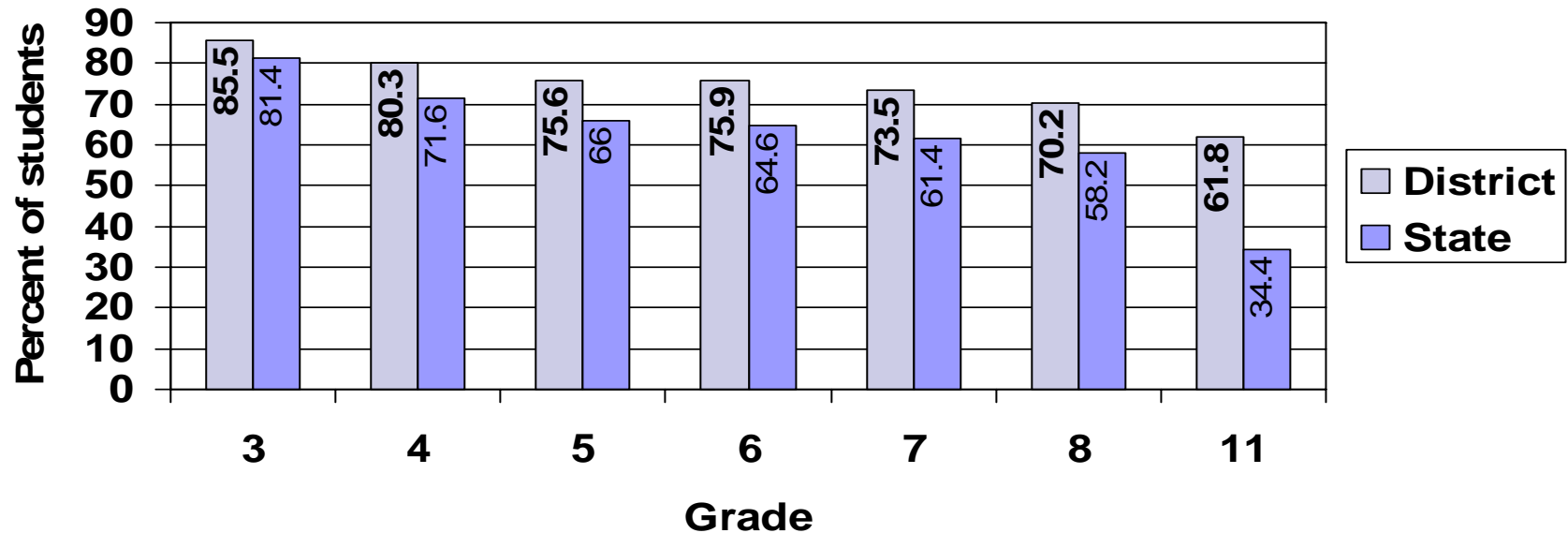
Minnesota Comprehensive Assessments-Series II

Mathematics-2008

- Mounds View students continue to out perform grade-level peers in the state.
- Mounds View students increased mean scale score in most grade levels
- Almost all grade levels show increase in percent of students proficient
 - Grade 8 decrease was similar to state-level Grade 8 performance
 - Grade 11 at Mounds View High School had the highest percentage of students proficient in the Metro Area with 71% proficient
 - Schools that came close: Edina 67%, Delano 66%, Waconia 65%
 - Turtle Lake Elementary has 90% students proficient
 - Three Schools have grades with above 90% students proficient:
 - Island Lake Grade 5
 - Sunnyside Grade 3
 - Turtle Lake Grade 3 & 4

2008 MCA-II Mathematics

District & State Comparison
Math Proficiency: % Meeting or Exceeding the Standards

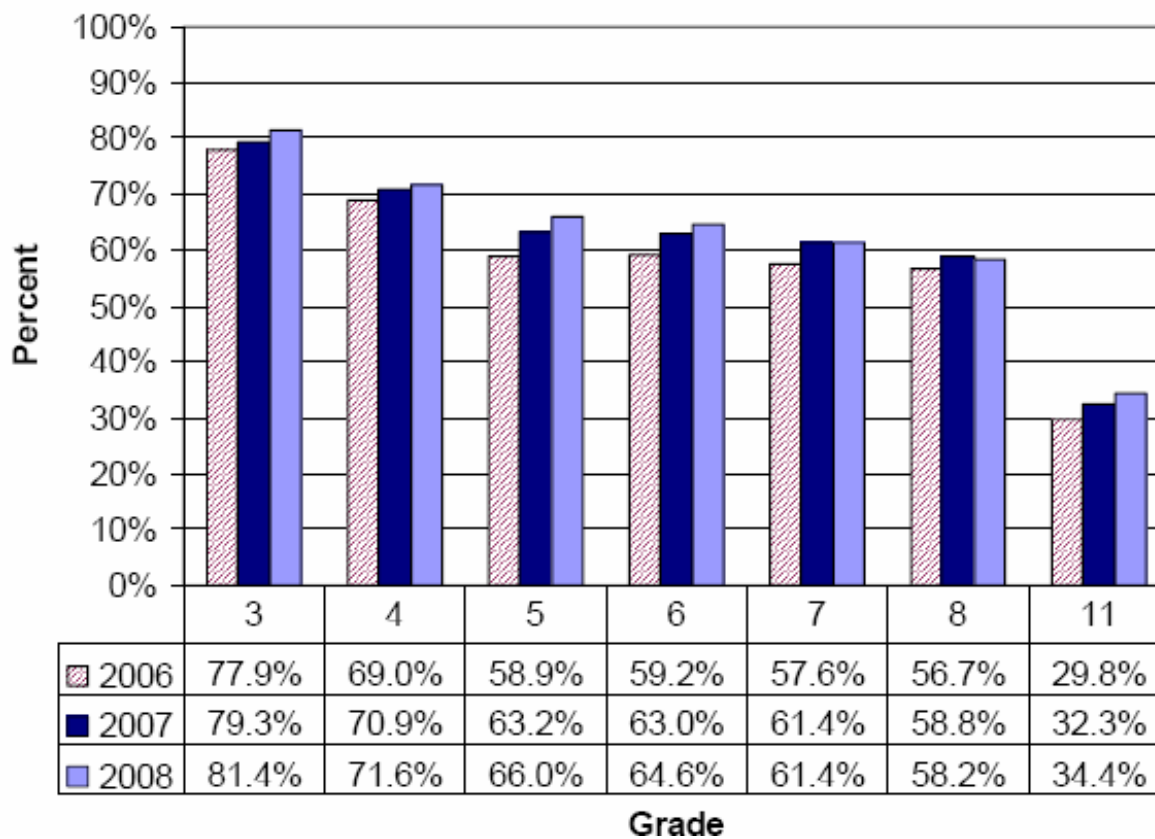


2007 & 2008 MCA-II Mathematics Mean Scale Score

Grade	STATE MEAN SCALE SCORE		DISTRICT MEAN SCALE SCORE	
	2008	2007	2008	2007
3	359.1	358.7	362.1	361.8
4	456.7	456.7	460.6	458.7
5	554.2	554.1	557.7	559.1
6	653.7	652.9	659.2	659.1
7	752.8	752.7	759.2	759.5
8	851.3	851.2	856.9	857.8
11	1141.1	1140.2	1154.1	1152.7

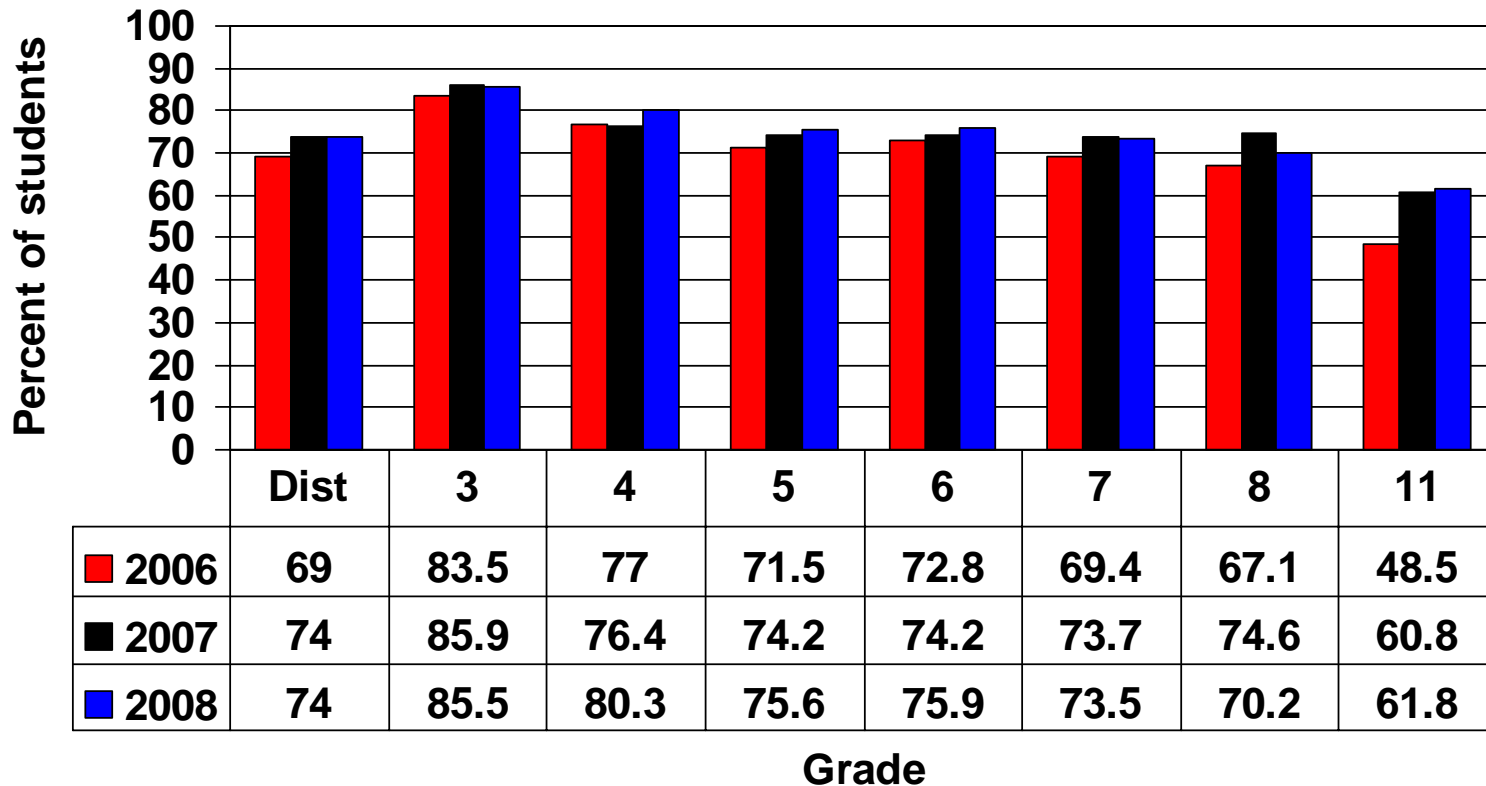
Mathematics MCA-II

Percent of Students Proficient in Each Grade by Year



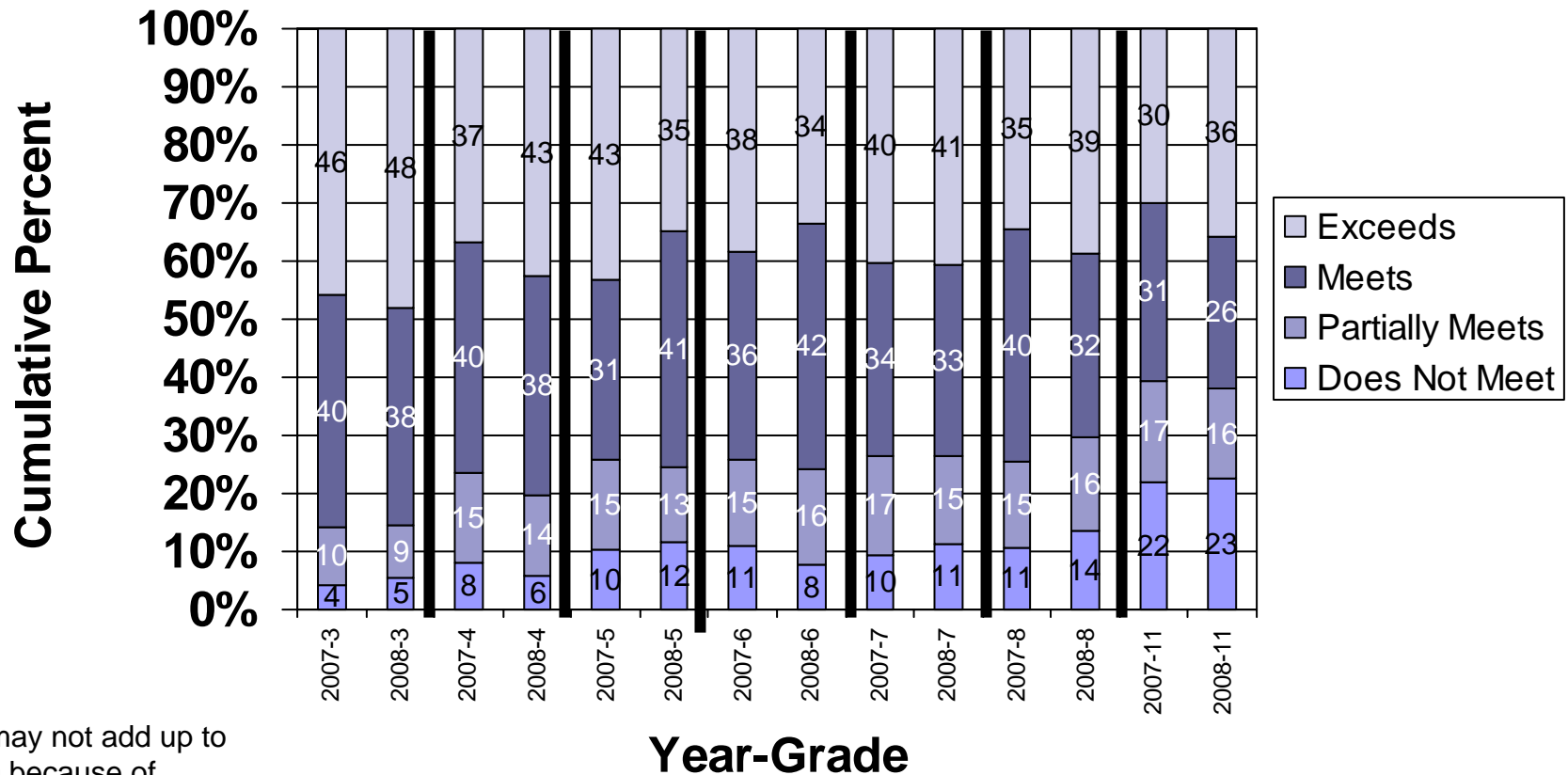
2008 MCA-II Mathematics Results

District Math Proficiency
2006-2008 Comparison



2007 & 2008 MCA-II Mathematics

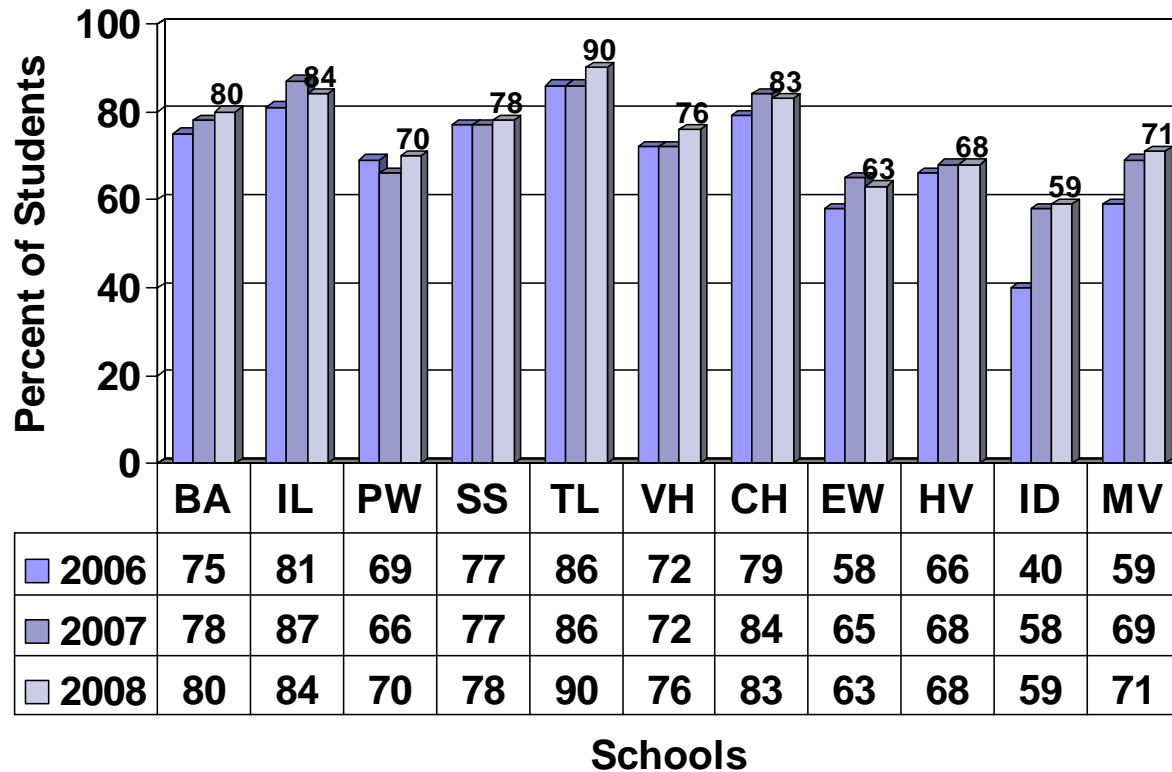
Percentage of Mounds View Students at Each Achievement Level



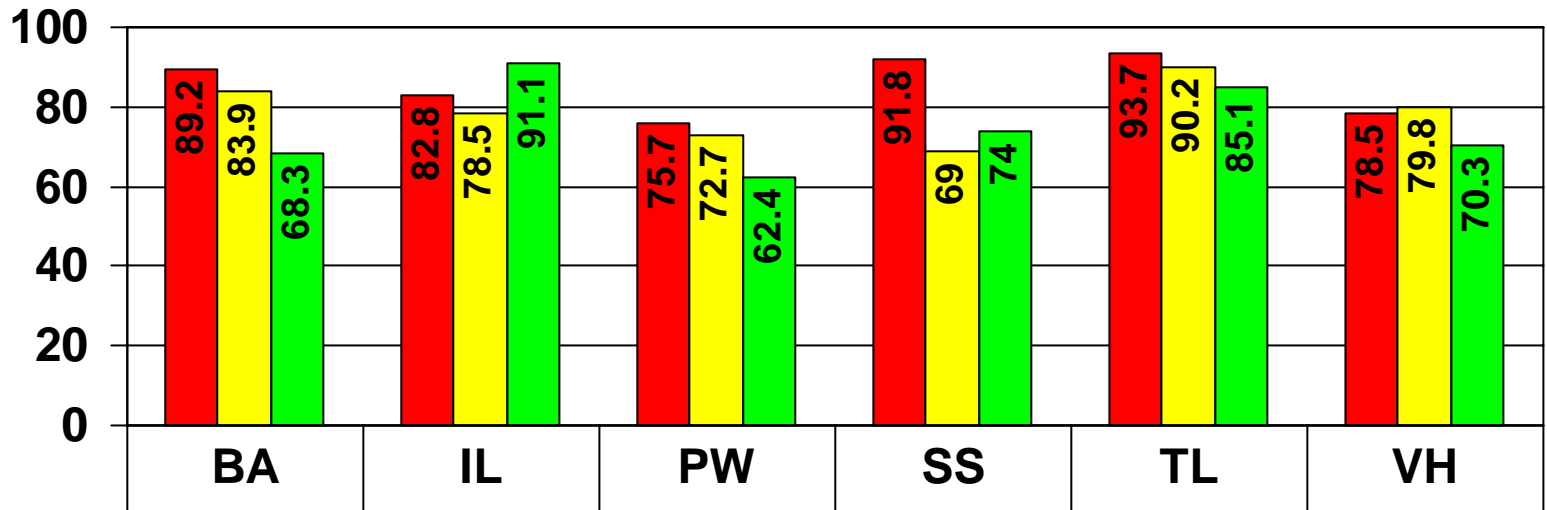
% may not add up to 100 because of rounding

Overall Proficiency by School Mathematics

Mathematics Comparison 2006 to 2008
District Proficiency 2006=69, 2007=74 2008=74

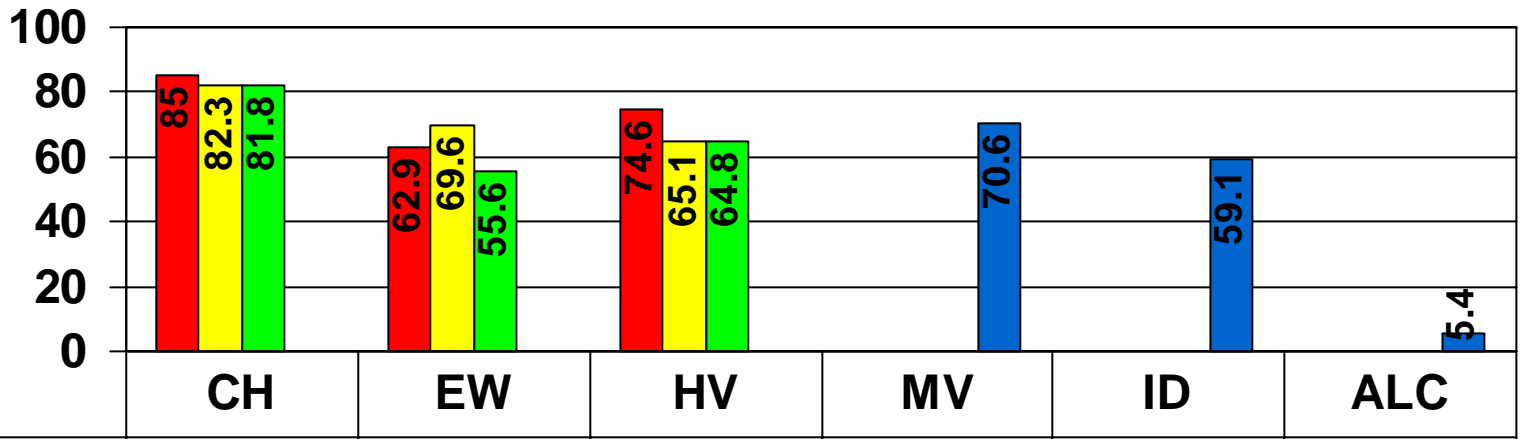


Proficiency by Grade at each School Elementary MCA-II Mathematics-2008



■ Grade 3	89.2	82.8	75.7	91.8	93.7	78.5
■ Grade 4	83.9	78.5	72.7	69	90.2	79.8
■ Grade 5	68.3	91.1	62.4	74	85.1	70.3

Proficiency by Grade at each School Secondary MCA-II Mathematics- 2008

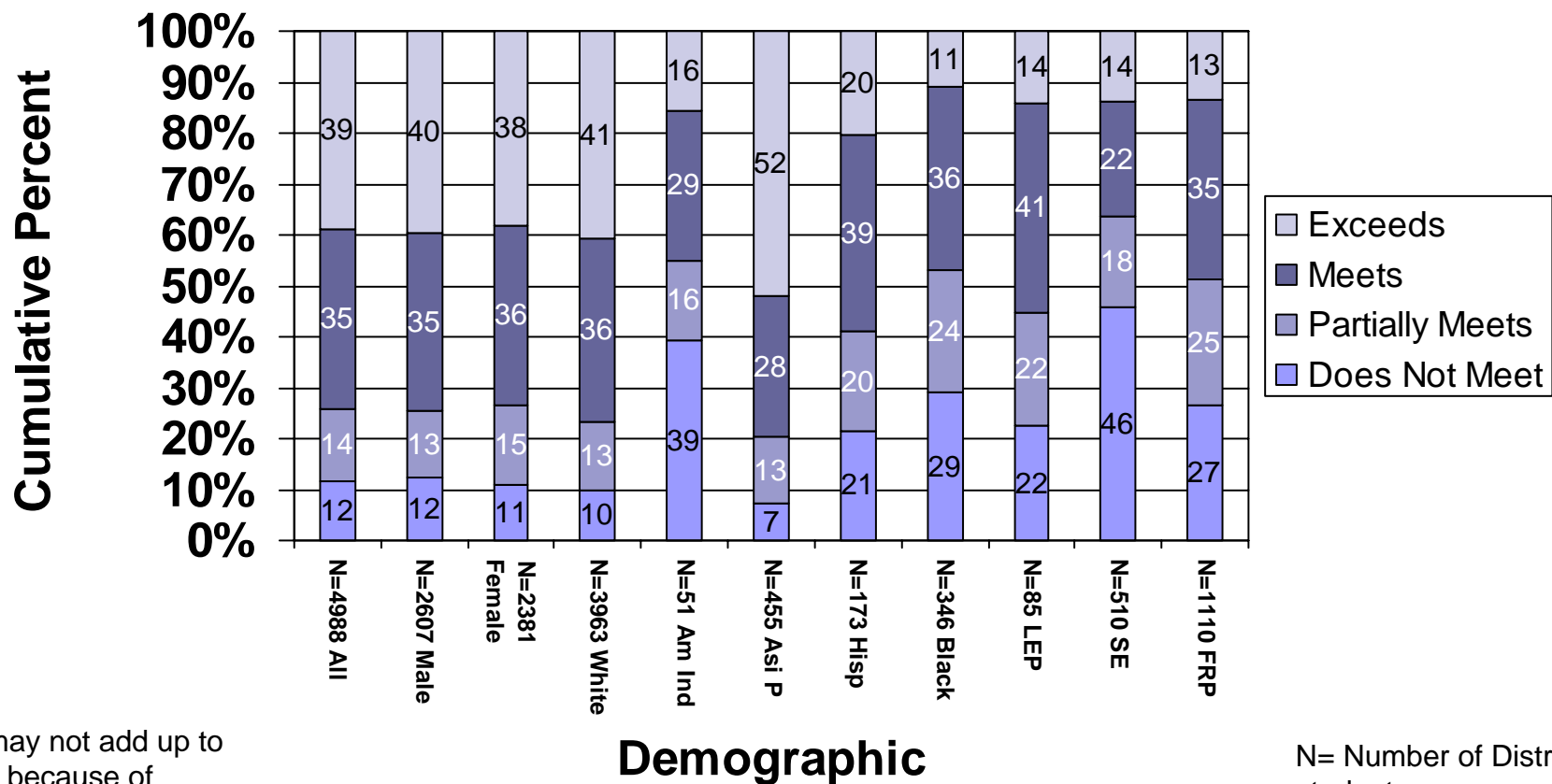


Grade 6	85	62.9	74.6			
Grade 7	82.3	69.6	65.1			
Grade 8	81.8	55.6	64.8			
Grade 11				70.6	59.1	5.4

2008 Proficiency by Demographic

MCA-II Mathematics

Percentage of Mounds View Students at Each Achievement Level



% may not add up to 100 because of rounding

N= Number of District students

Minnesota Comprehensive Assessments-Series II

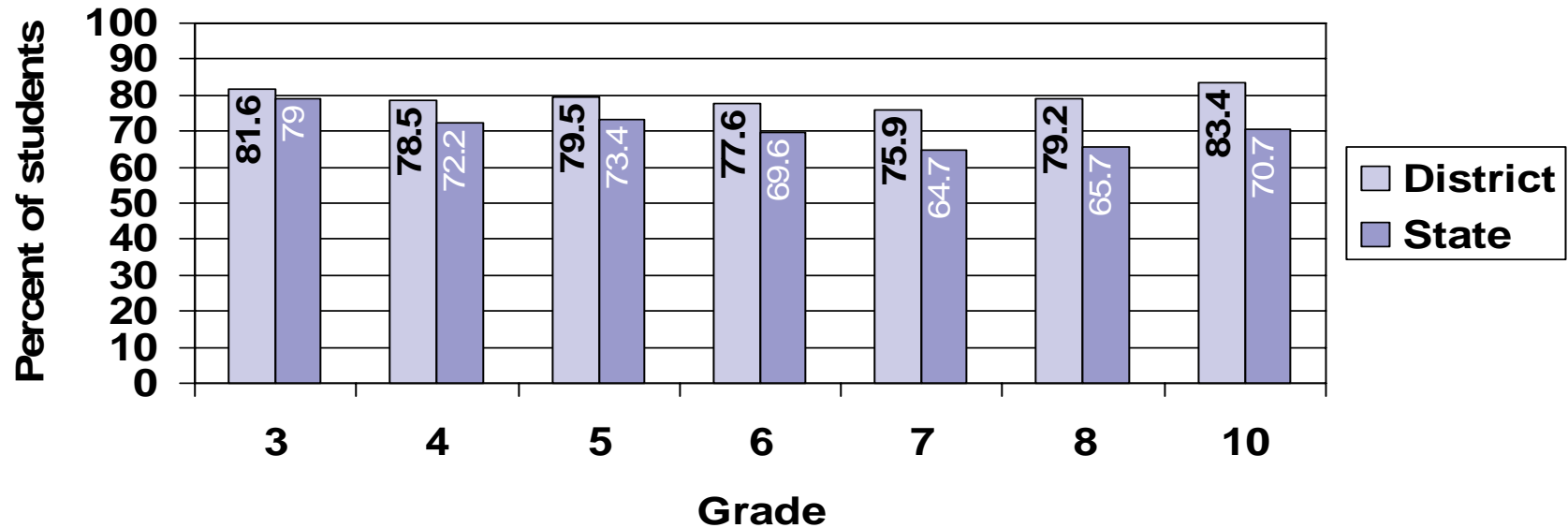
Reading-2008

- Mounds View students continue to outperform grade-level peers in the state.
- Mounds View students increased mean scale score in most grade levels
- Almost all grade levels show increase in percent of students proficient
 - Grade 3 decrease was similar to state-level Grade 3 performance
 - Grade 10 showed the greatest increase attributed to student motivation to pass the GRAD Reading included in the MCA-II Reading
 - 9% increase for state
 - 5% increase for Mounds View
- Turtle Lake Elementary and Mounds View High School had 90% proficient or above

2008 MCA-II Reading

District & State Comparison

Math Proficiency: % Meeting or Exceeding the Standards

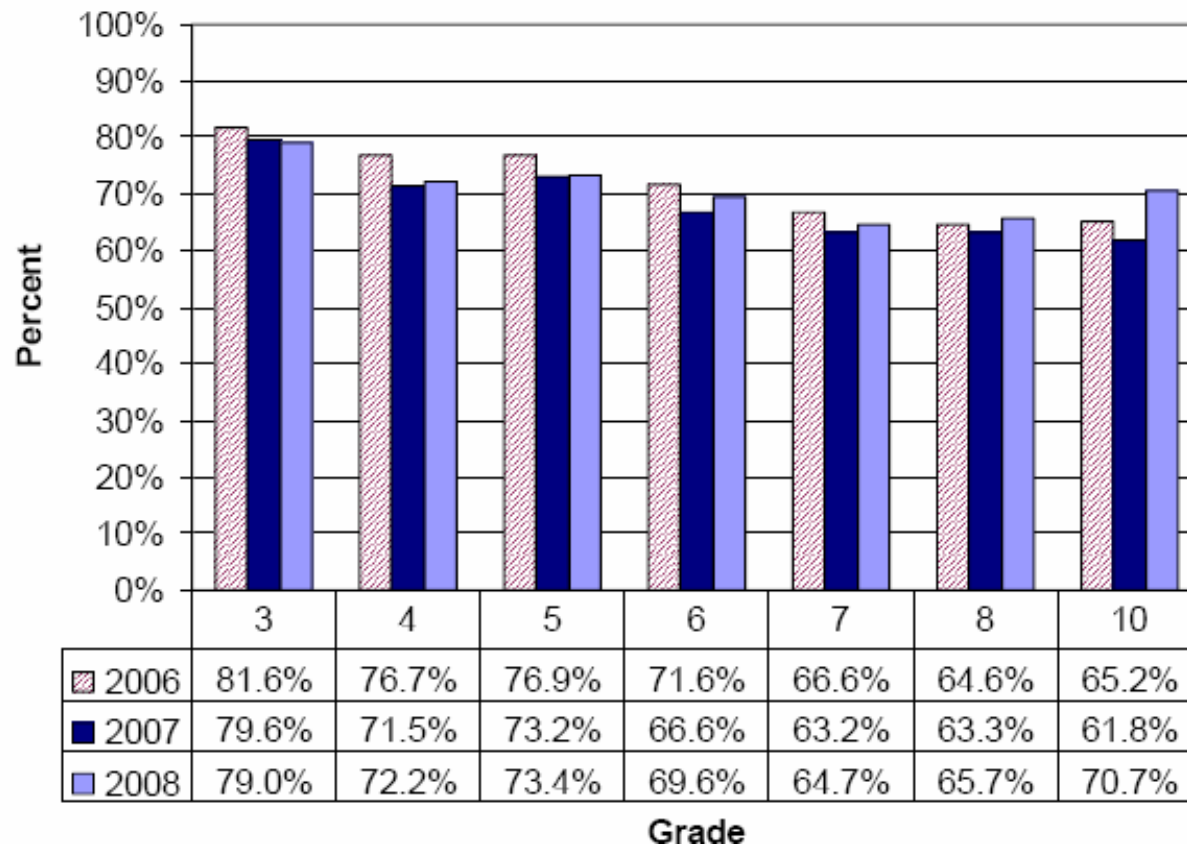


2007 & 2008 MCA-II Reading Mean Scale Score

Grade	STATE MEAN SCALE SCORE		DISTRICT MEAN SCALE SCORE	
	2008	2007	2008	2007
3	363.1	363.2	365.7	368.5
4	457.2	457.0	460.5	459.6
5	557.1	557.5	560.4	561.0
6	655	654.1	658.7	658.6
7	753.6	752.7	758.7	758.3
8	853.4	853.4	858.8	859.0
10	1055.8	1052.6	1061.4	1060.2

Reading MCA-II

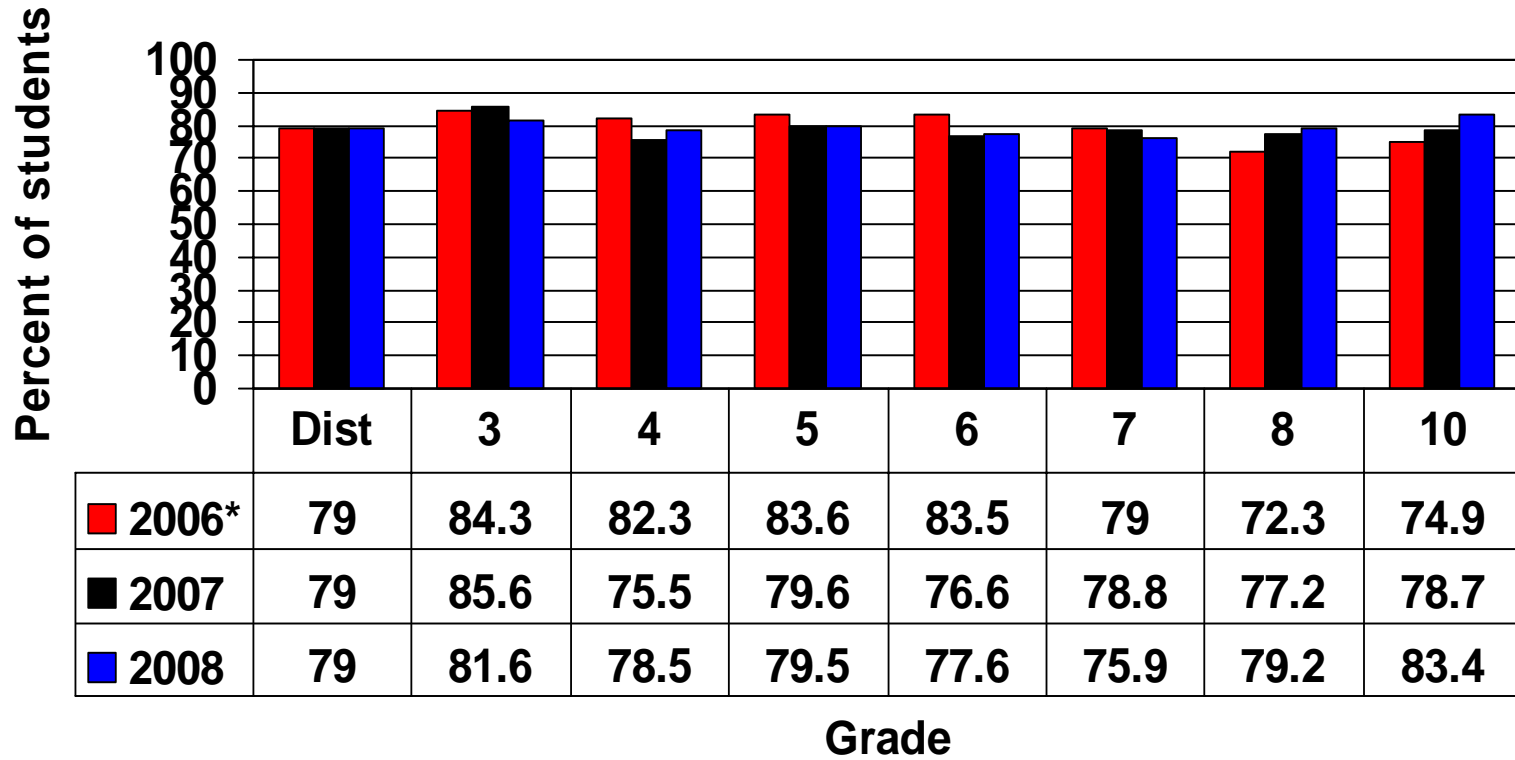
Percent of Students Proficient in Each Grade by Year



**Most English Language Learners took the TEAE instead of the MCA-II Reading in 2006.*

2008 MCA-II Reading

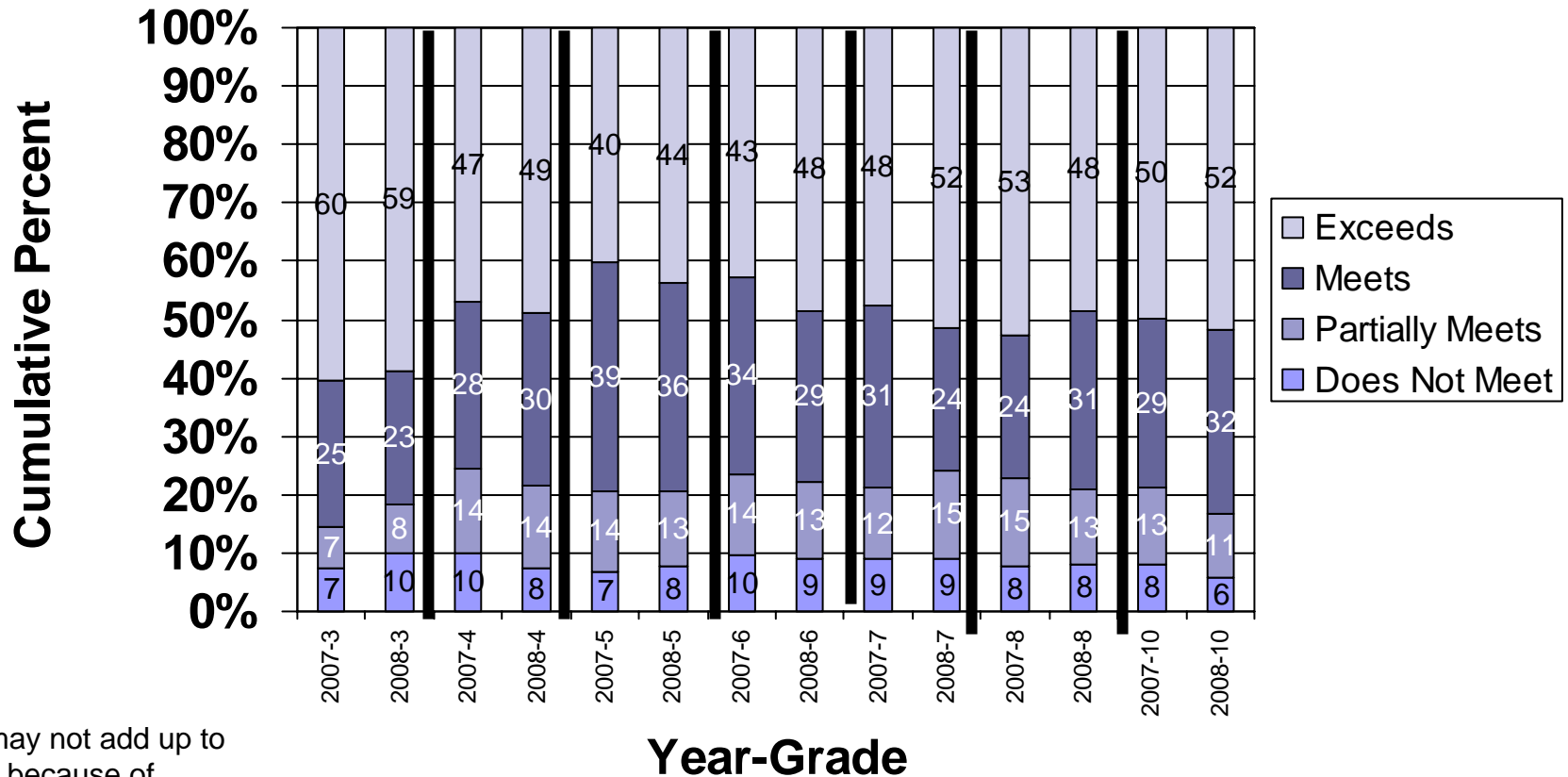
District Reading Proficiency 2006-2008 Comparison



**Most English Language Learners took the TEAE instead of the MCA-II Reading in 2006.*

2007 & 2008 MCA-II Reading

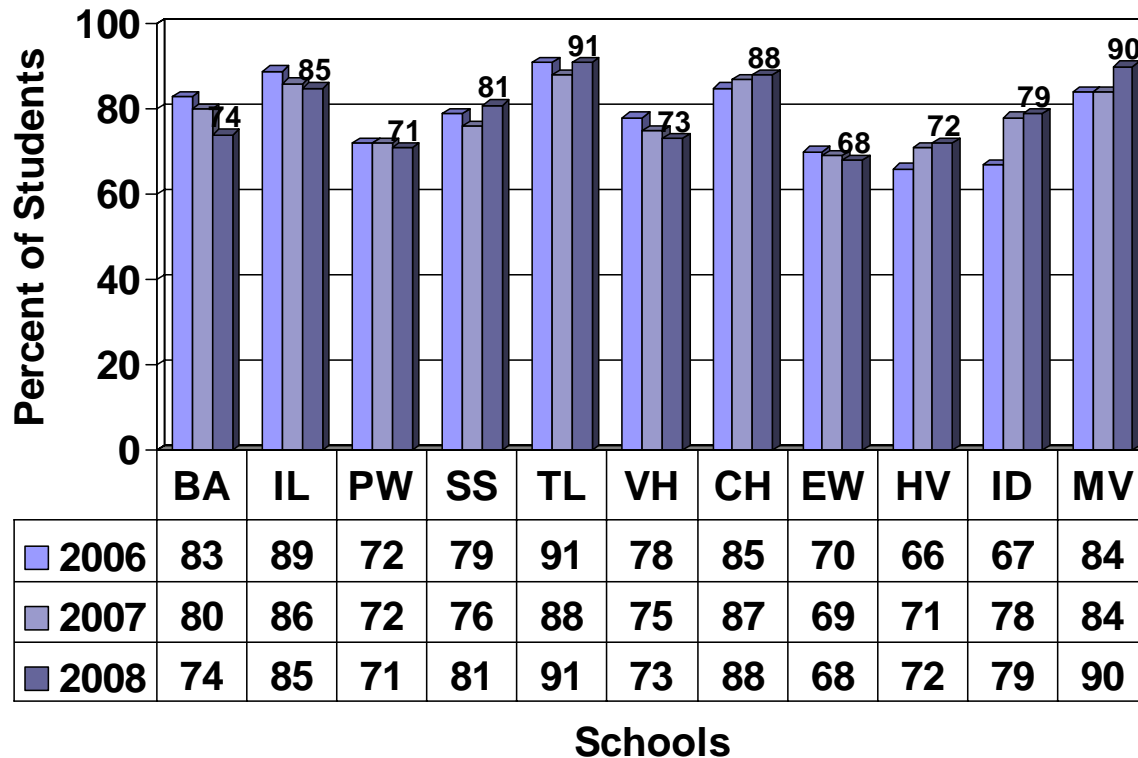
Percentage of Mounds View Students at Each Achievement Level



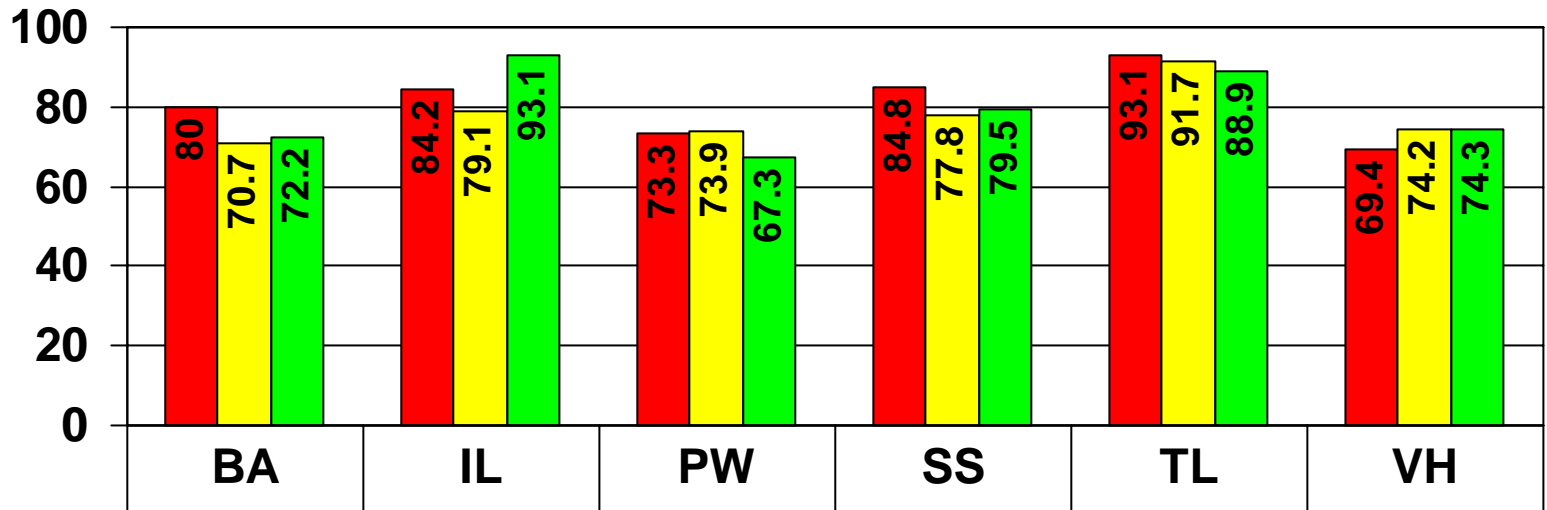
% may not add up to 100 because of rounding

Overall Proficiency by School Reading

Reading Comparison 2006 to 2008
District Proficiency 2006=79 2007=79 2008=79

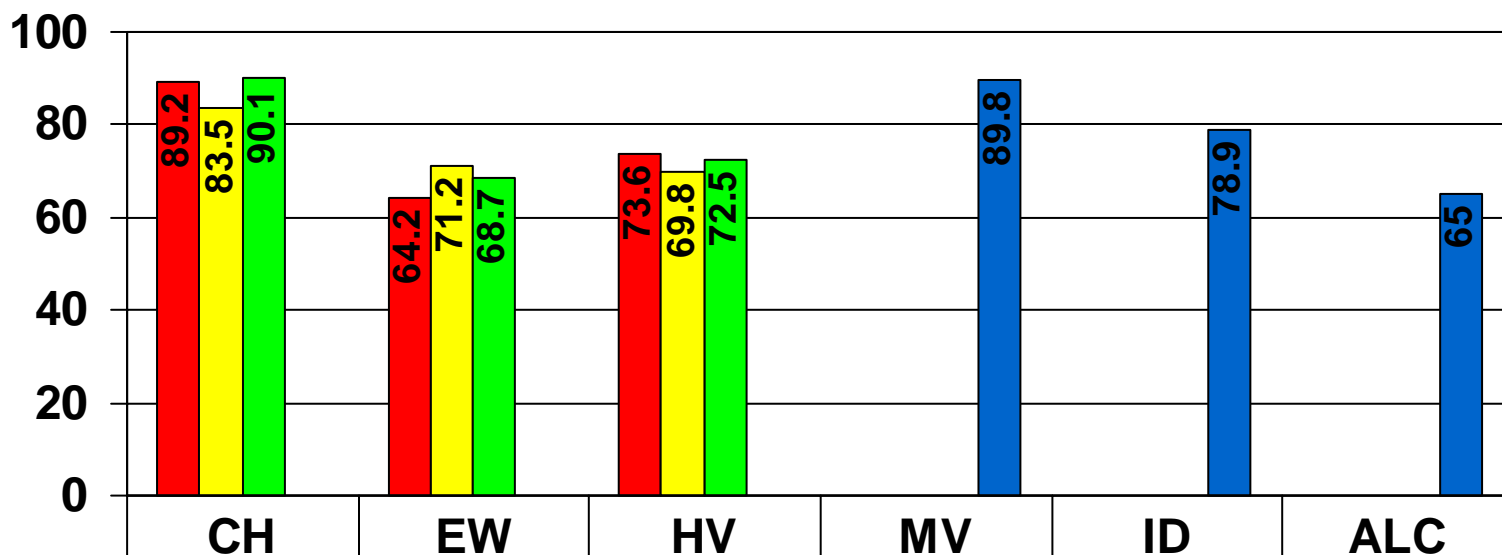


Proficiency by Grade at each School Elementary MCA-II Reading-2008



■ Grade 3	80	84.2	73.3	84.8	93.1	69.4
■ Grade 4	70.7	79.1	73.9	77.8	91.7	74.2
■ Grade 5	72.2	93.1	67.3	79.5	88.9	74.3

Proficiency by Grade at each School Secondary MCA-II Reading 2008

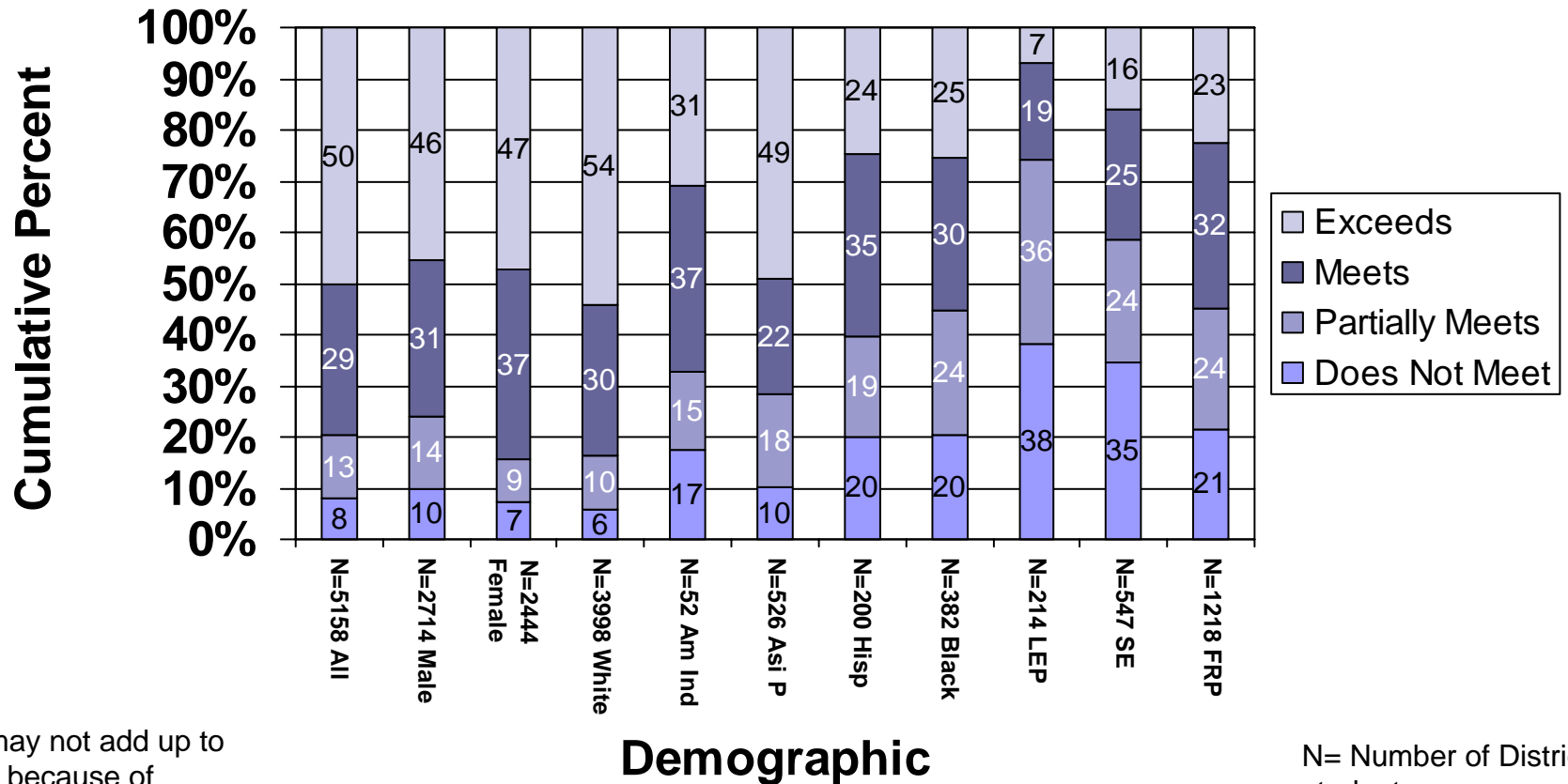


■ Grade 6	89.2	64.2	73.6			
■ Grade 7	83.5	71.2	69.8			
■ Grade 8	90.1	68.7	72.5			
■ Grade 11				89.8	78.9	65

2008 Proficiency by Demographic

MCA-II Reading

Percentage of Mounds View Students at Each Achievement Level



% may not add up to 100 because of rounding

N= Number of District students



Adequate Yearly Progress

2008 AYP Results

- The district (all schools) and each individual school met all our NCLB AYP targets in:
 - **Participation**-District Math 99.81 District Reading 99.75
 - **Attendance**- District 94.78
 - **Graduation**-District 96.48
- The district (all schools) and at 8 of the 12 individual schools did not meet AYP targets for various demographic groups in **Proficiency**

School	# of eligible groups	% Met AYP	School	# of eligible groups	% Met AYP
BA	25	96.0%	CH	27	96.3%
IL	21	100%	EW	29	93.1%
PW	25	84.0%	HV	31	83.9%
SS	18	100%	ID	19	100%
TL	19	89.5%	MV	19	100%
VH	23	78.3%	ALC	6	50%

District and School Report Cards can be found at:
<http://education.state.mn.us>

School Report Card : Academic Excellence : Minnesota Department of Education

Address: http://education.state.mn.us/ReportCard2005/schoolDistrictInfo.do?SCHOOL_NUM=000&DISTRICT_NUM=0621&DISTRICT_TYPE=01

Minnesota Department of Education

School Report Card

Home: Academic Excellence: School Report Card: MOUNDS VIEW PUBLIC SCHOOL DISTRICT:

MOUNDS VIEW PUBLIC SCHOOL DISTRICT

About This Section

Contact MDE
651-582-8200

About This District

Superintendent:
DAN HOVERMAN

350 HIGHWAY 96 W
SHOREVIEW, MN 55126
651-621-6001

Photo Gallery

MOUNDS VIEW PUBLIC SCHOOL DISTRICT

Related Links

Additional Report Cards:

Report Card Information

The Report Card has lots of information about your district. Some of the information appears below. Other information can be found by choosing the options on the right.


2008 Adequate Yearly Progress

Making Adequate Yearly Progress depends on schools and school districts achieving **annual proficiency** targets on state reading and math tests. For more information click on the hyperlinks below.

MOUNDS VIEW PUBLIC SCHOOL DISTRICT has 38 eligible groups and has met 84.2% of the requirements for **Adequate Yearly Progress** under No Child Left Behind.

	Reading		Mathematics			
	Participator	Proficiency	Participator	Proficiency	Attendance	Graduation
All Students	Yes	Yes	Yes	Yes	Yes	Yes
American Indian / Alaskan Native	Yes	Yes	Yes	Yes		
Asian/Pacific Islander	Yes	Yes	Yes	Yes		

View as of 8-8-08.
 Final view to be complete 8-21-08



Graduation Required Assessment for Diploma

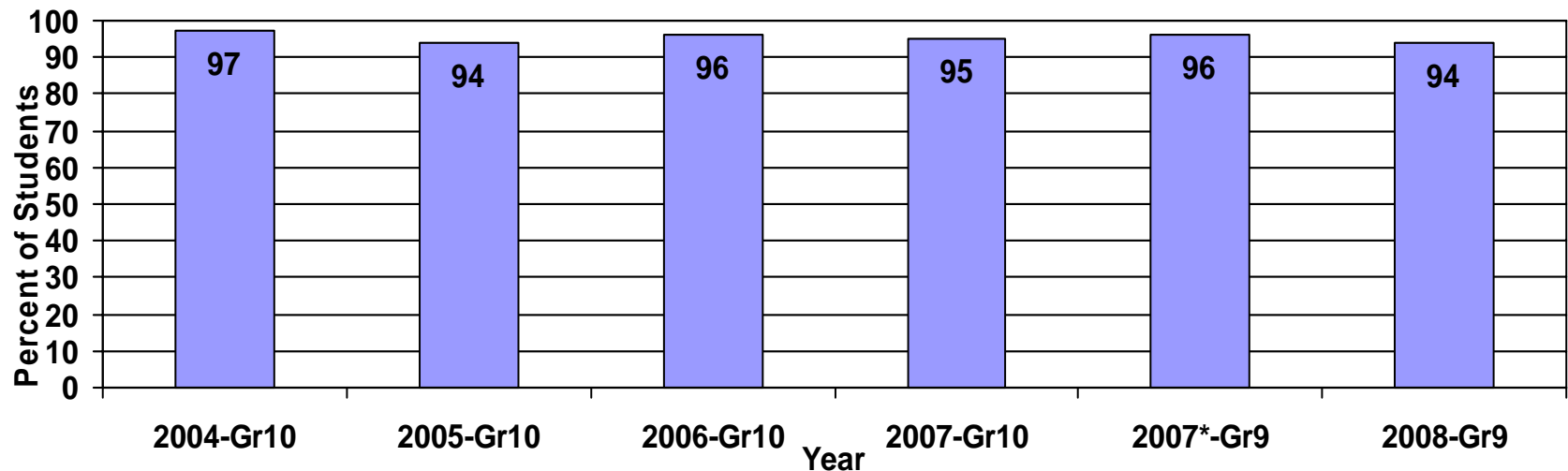
Follow the Class of 2010

(Beginning in 2006-2007)

Student Grade	2006 – 2007	2007 – 2008	2008 – 2009	2009 – 2010
9 th	GRAD Writing			
10 th		MCA-II Reading GRAD Wtg Retest		
11 th			MCA-II Math GRAD W/R Retests	
12 th				All GRAD Retests

Written Composition Proficiency BST and GRAD

Percent of Students Proficient each Year

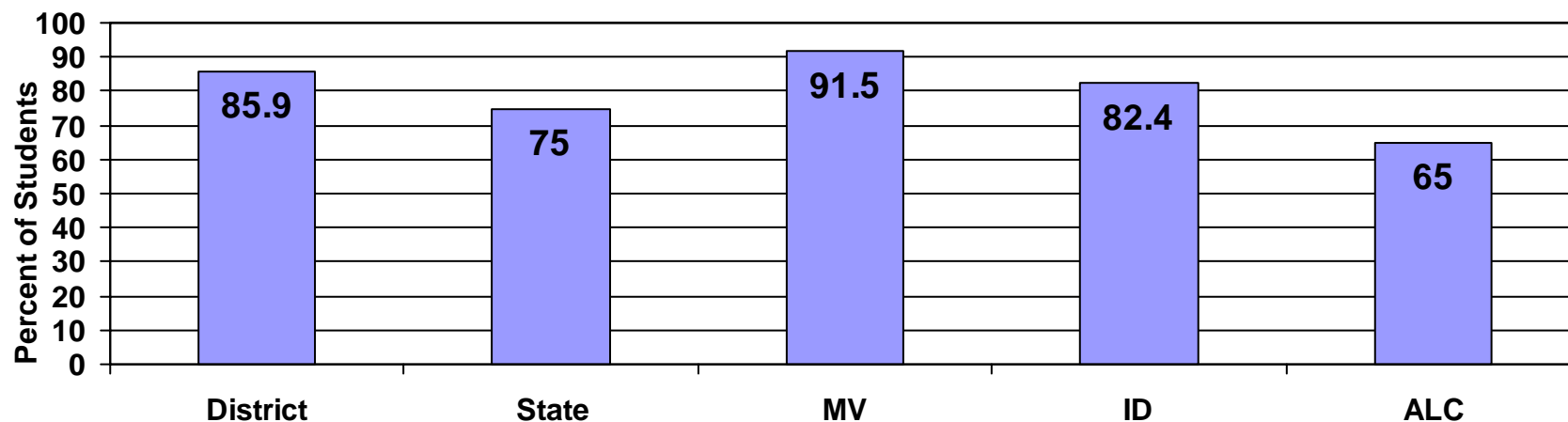


2007 was the last year that the BST Written composition was administered to MN 10th Graders

***2007 was the first year that the GRAD Written Composition was administered to MN 9th Graders**

Reading Proficiency on GRAD

Percent of Students Proficient 2008



The GRAD Reading was first administered to Grade 10 students as part of the MCA-II Reading administration in 2008.

83.4% of students assessed were proficient on the MCA-II, and therefore proficient on the GRAD.

2.5% of students were proficient on the GRAD only

MCA-II Reading and GRAD Reading Results are included together on the Individual Student Report to be sent home in early September



Mounds View Public Schools Achievement Goals for 2009

Setting Goals For 2009: MCA-II

MCA-II Achievement Goals For 2009:

- The percent of all students who earn achievement levels of Meets the Standards or Exceeds the standards (proficient) on the MCA-II for Mathematics at Mounds View Public Schools will increase from 74% in 2008 to 76% in 2009. (Similar goal as 07-08)
- The percent of all students who earn achievement levels of Meets the Standards or Exceeds the standards (proficient) on the MCA-II for Reading at Mounds View Public Schools will increase from 79% in 2008 to 81% in 2009. (Similar goal as 07-08)

Setting Goals For 2009: MCA-II

MCA-II Achievement Goals for 2009:

- The Gap between the Percent of All students at Mounds View Public School Proficient on the MCA-II Mathematics and the Percent of Black, not of Hispanic origin Proficient on the MCA-II Mathematics will decrease from 27 percentage points in 2008 to 20 percentage points in 2009. *74% compared to 47%* (New goal for 08-09)
- The Gap between the Percent of All students at Mounds View Public Schools Proficient on the MCA-II Reading and the Percent of Black, not of Hispanic origin Proficient on the MCA-II reading will decrease from 15 percentage points in 2008 to 10 percentage points in 2009. *70% compared to 55%* (New goal for 08-09)



Setting Goals for 2009: GRAD

GRAD Achievement Goals For 2009:

- The percent of Grade 9 students who earn achievement levels of 3 or above (proficient) on the GRAD Test of Written Composition at Mounds View Public Schools will increase from 94% in 2008 to 96% in 2009. (Similar goal as 07-08)
- The percent of Grade 10 students who earn an achievement level of proficient on the MCA-II Reading and the GRAD Test of Reading combined at Mounds View Public Schools will increase from 86% in 2008 to 88% in 2009. (New goal for 08-09)

Setting Goals for 2009: NWEA

NWEA Achievement Goals For 2009:

- The percent of all students in grades 3-8 who meet or exceed individual NWEA math RIT target Scores as measured from Spring 2008 to Spring 2009 on the NWEA-MAP Mathematics Survey of Goals Assessment at Mounds View Public Schools will increase from 60% in 2008 to 64% in 2009. (Similar goal as 07-08)
- The percent of all students in grades 3-8 who meet or exceed individual NWEA math RIT target Scores as measured from Spring 2008 to Spring 2009 on the NWEA-MAP Reading Survey of Goals Assessment at Mounds View Public Schools will increase from 63% in 2008 to 65% in 2009 (07-08 goal was 58%-EXCEEDED)

Questions...

- Mary Roden,
 - Coordinator of Assessment/Evaluation
- 651-621-6042
- Mary.Roden@moundviewschools.org