

Mounds View High School ISIIP Presentation



Mounds View
HIGH SCHOOL
Mounds View Public Schools

MVHS Leadership

Building Instructional Leadership Team:

Amy Alvarez

Jodie Bias

Phillip Richardson

Julie Wikelius

Donna Andren

Colly Diehl

Pam Tangen

Gretchen Zahn

Justin Benolkin

Melissa Nicolas

Scott Wiens

Curriculum Contact Teachers:

Donna Andren—Science

Liv Rosin—Language Arts

Tina Tanner—World Language

Leah Higginbotham—Math

Kay Schaffer—Social Studies

In Building District Coordinators:

Mike Huberty—Math

Mandy Little—Student Support Coordinator

Instructional Strategies Facilitator:

Mike Coty

Context and Reality

	Native American	Asian/Pacific Islander	Black	Hispanic	White	Free/ Reduced
2005-06	<i>.22%</i>	<i>8.60%</i>	<i>2.50%</i>	<i>1.70%</i>	<i>87.00%</i>	<i>6.00%</i>
2006-07	<i>.32%</i>	<i>9.10%</i>	<i>2.70%</i>	<i>1.60%</i>	<i>86.20%</i>	<i>7.30%</i>
2007-08	<i>.35%</i>	<i>10.00%</i>	<i>3.00%</i>	<i>1.90%</i>	<i>86.60%</i>	<i>8.40%</i>
2008-09	<i>.49%</i>	<i>10.40%</i>	<i>3.10%</i>	<i>2.10%</i>	<i>83.80%</i>	<i>8.00%</i>
2009-10	<i>.30%</i>	<i>10.50%</i>	<i>3.70%</i>	<i>2.50%</i>	<i>83.10%</i>	<i>11.10%</i>
2010-11	<i>.30%</i>	<i>10.40%</i>	<i>4.30%</i>	<i>2.60%</i>	<i>82.40%</i>	<i>10.50%</i>

Increasing MCA Achievement

MVHS Goal #1

Minnesota Accountability Tests in Mathematics at Mounds View High School will increase from 78.5% in 2010 to 80.5% in 2011.

80.5% of the Grade 11 students who participate in the MCA-II for Mathematics will meet or exceed the standards (proficient).

Increasing MCA Achievement

MVHS Goal #2:

Minnesota Accountability Test for Reading at Mounds View High School will increase from 92.4% in 2010 to 93.4% in 2011.

93.4% of the Grade 10 students who participate in the MCA-II for Reading will meet or exceed the standards (proficient).

Increasing GRAD Achievement

MVHS Goal #3:

Minnesota Accountability Test of Written Composition at Mounds View High School will maintain the 98.4% from 2010 into 2011.

98.4% of the Grade 9 students who participate in the GRAD Test of Written Composition will meet or exceed the standards (proficient).

Strategies: Goals 1-3

- **Instructional Model**
- **Coordination with feeder middle schools and Irondale**
- **Formative Assessments**
- **Common Summative Assessments**
- **Collection and analysis of student data**
- **Moodle**

Interventions: Goals 1 - 3

- **Strategies classes for Reading, Mathematics, and Writing**
- **Data used to identify students at risk and develop a remedial plan**
- **After school test prep sessions**
- **Additional after school buses**
- **Peer Tutoring (NHS)**

Increasing Student Achievement

MVHS Goal #4:

Through the practice of using summative and formative assessment results for staff to evaluate instructional efforts, to provide feedback to students, and to define targets for improvement, we will decrease the number of failing grades from the 2009-10 school year and ultimately increase achievement for all students.

Interventions Unique to Goal #4

- **Staff Development and Awareness**
- ***Stangs* Program**
- **Faculty Mentors**
- **Parent Open Houses**
- ***Steps to Success* Transitions Course**

Increasing Student Connectedness

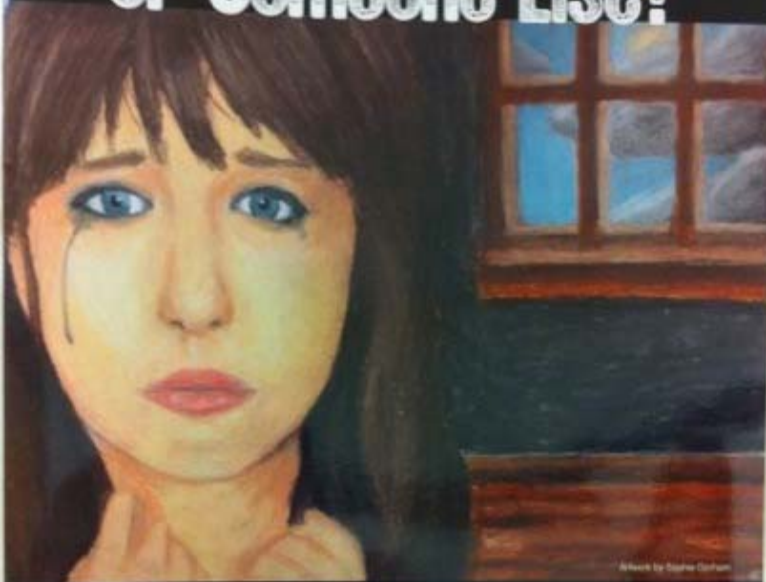
MVHS Goal #5:

Implement strategies to help personalize and connect students and staff to promote emotional and mental health for the school community.

Implementation of Goal 5

- **Health Curriculum**
- **9th Grade Presentations**
- **Staff Development**
- **Mustang Cup**
- **Mustang Mentors**
- **Activity fees funding assistance**
- **“Tell Someone” Posters**

**Worried About Yourself
or Someone Else?**



**There are some secrets
you shouldn't keep.**

TELL SOMEONE

Tell a parent, teacher, dean, coach,
or other trusted adult.
There are people who care.

Feeling Hopeless?



**There are some secrets
you shouldn't keep.**

TELL SOMEONE

Tell a parent, teacher, dean, coach,
or other trusted adult.
There's ALWAYS hope.

What's Next?

- **Hybrid courses**
- **Sustainable student connectedness**
- **School culture (student & staff)**
- **Educational equity**
- **Eliminate the predictability of failure**
- **Increase curricular alignment for post-secondary opportunities**
 - AP courses
 - Entry Point CIS
 - ACT