


# Mounds View Proficiency & Growth Results 2007-2008

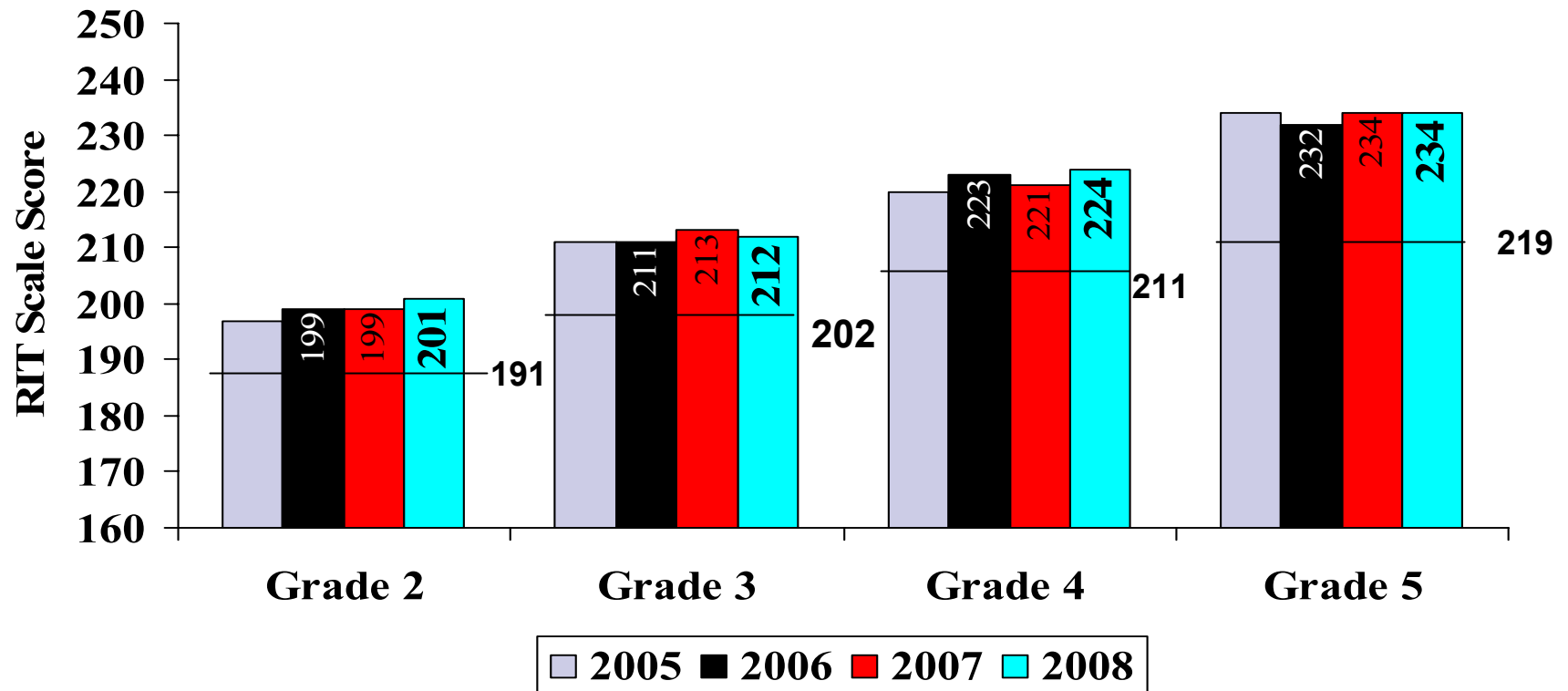
Local Assessments: NWEA-MAP  
June 10, 2008



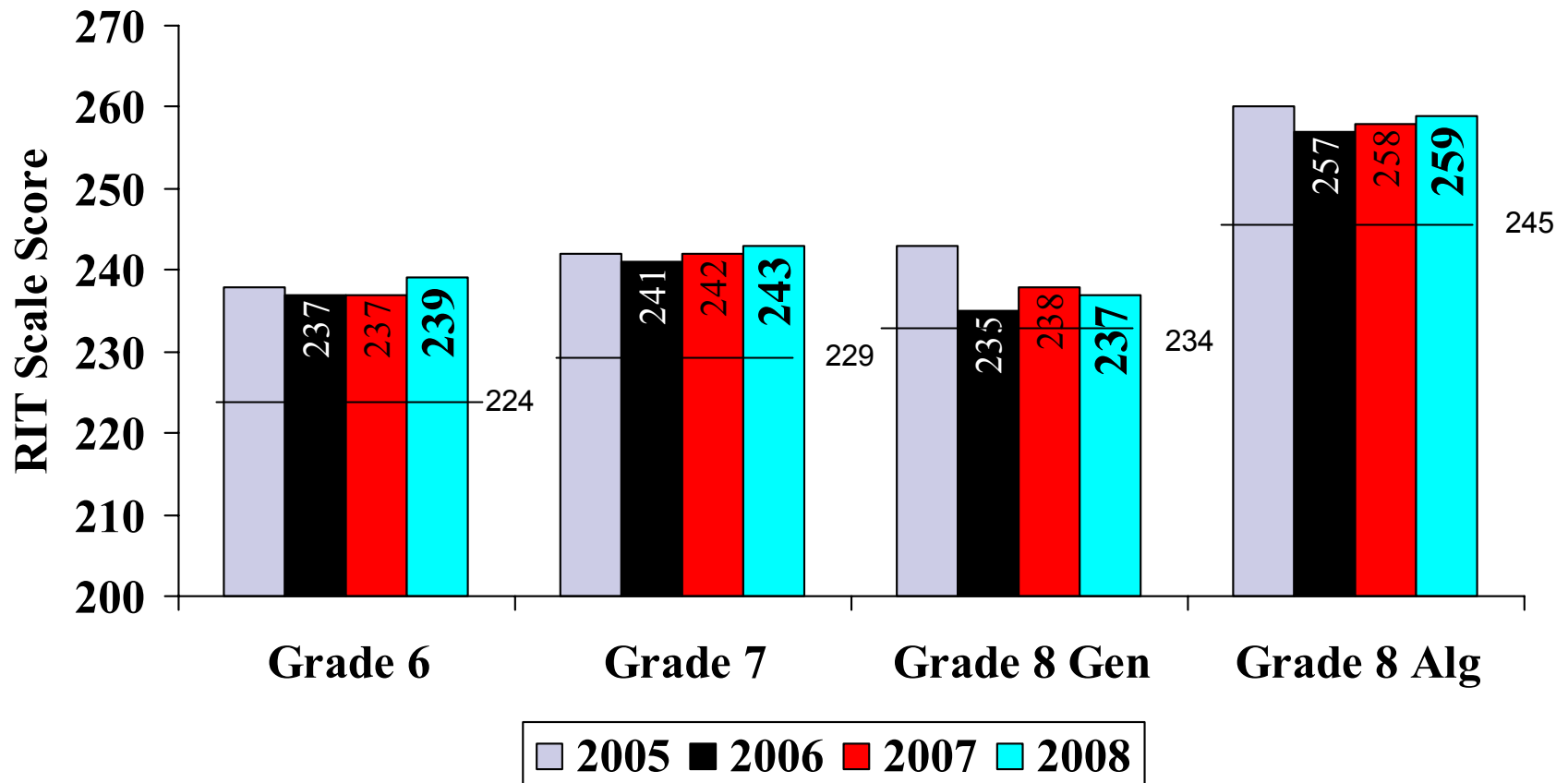
# Year One: Assessing Primary Grade Students

- Primary MAP Assessment
  - Reading and Math
  - Kindergarten and Grade 1 Students
- Aligns with needs of the primary students
- Adaptive
- Provides first point in long-term measure of student academic growth

# District 621- Elementary NWEA Median Math Scores by year

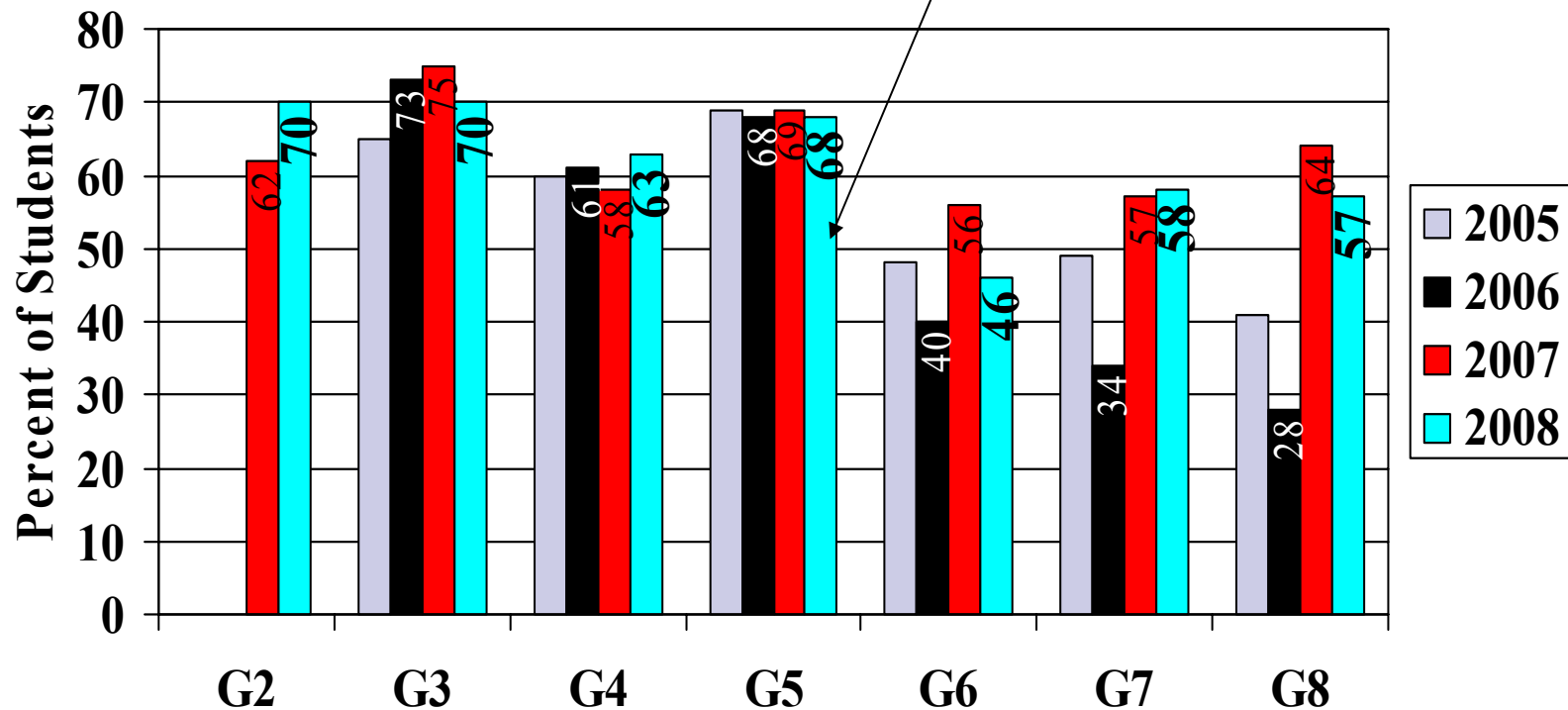


# District 621- Middle School NWEA Median Math Scores by year



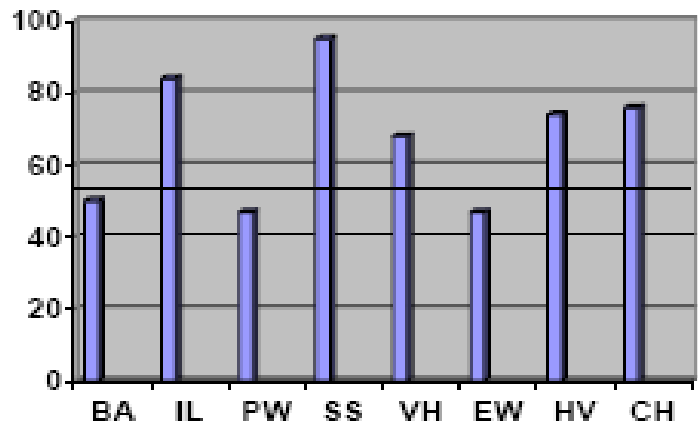
# Percent of Students meeting growth target: Math by Grade

Mathematics--NWEA 50% Benchmark



# Math Interventions Effectiveness

**Math Intervention Models**  
**Percent of Students Meeting or Exceeding Target Growth**



50%

School	Student Count	% showing growth	% meet or exceed target growth
BA	36	100	50
IL	87	99	84
PW	44	93	47
SS	22	100	95
TL	*	*	*
VH	31	100	68
EW	79	91	47
HV	38	92	74
CH	75	97	76

\*IL: 100% of 3<sup>rd</sup> Graders exceeded their target growth

\*TL: Focused on Reading Intervention

# 2007-2008 Mathematics Results

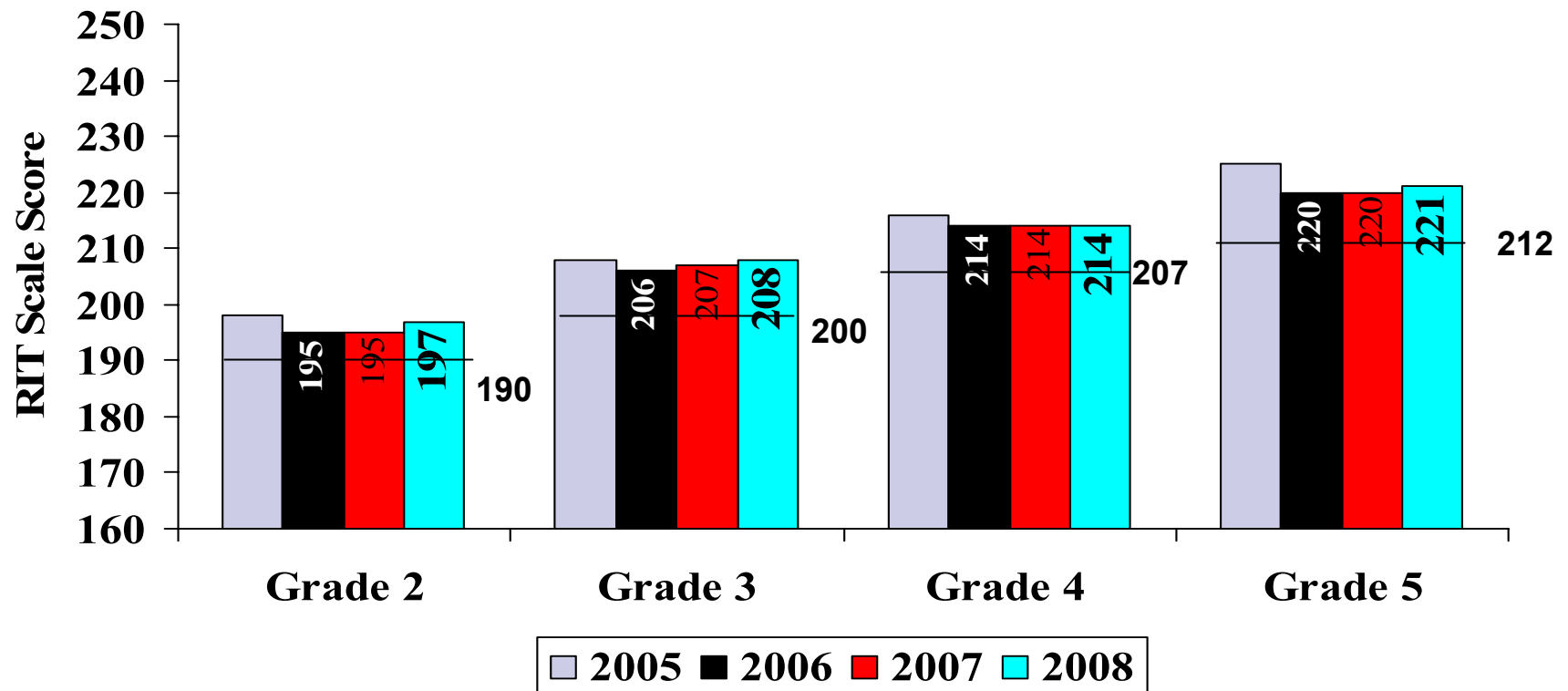
## ■ Mathematics Achievement

- Most grade levels show at least 50% of students meeting and exceeding target growth
  - District: 60% of students meet or exceed target growth (Goal was 64%)
    - Elementary: 67% of students met or exceeded target growth (Goal was 68%)
    - Middle: 53% of students met or exceeded target growth (Goal was 60%)
- Although the percentage of students meeting or exceeding their target growth was lower, the median did increase
- Median performance is a least one grade level above national norms in grades 2-3, two grade levels above national norms in grades 4-5, and three grade levels above national norms in grades 6-8.

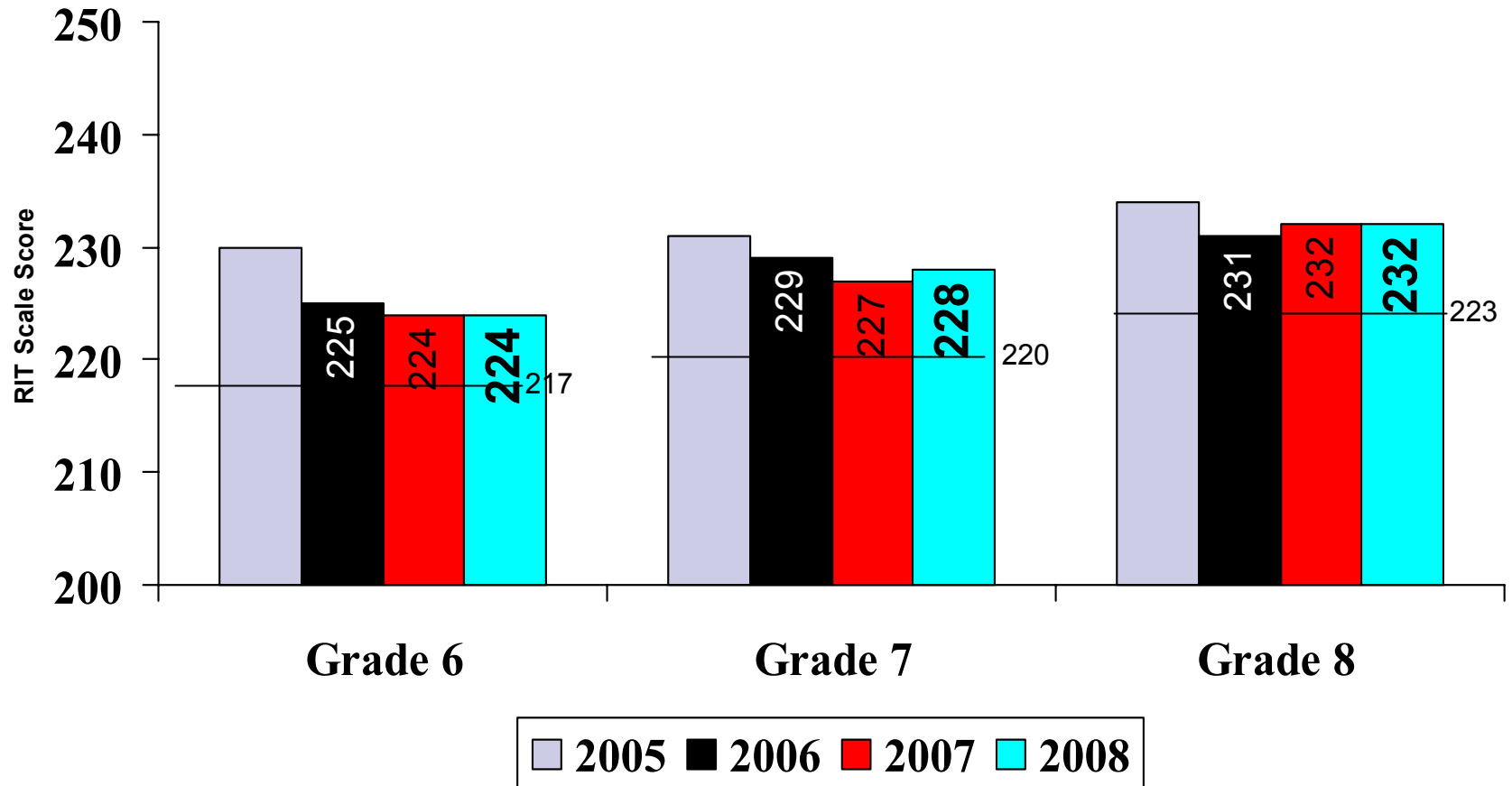
## Mathematics Interventions Achievement

- 412 students participated in Math Intervention Models, 96% of the students showed growth and 67% of the students met or exceeded their target growth.
- Students included in the intervention groups should exceed their growth target. Students should grow more than one year in one year's time.
- Interventions need to be maintained and in select cases expanded

# District 621- Elementary NWEA Median Reading Scores by year

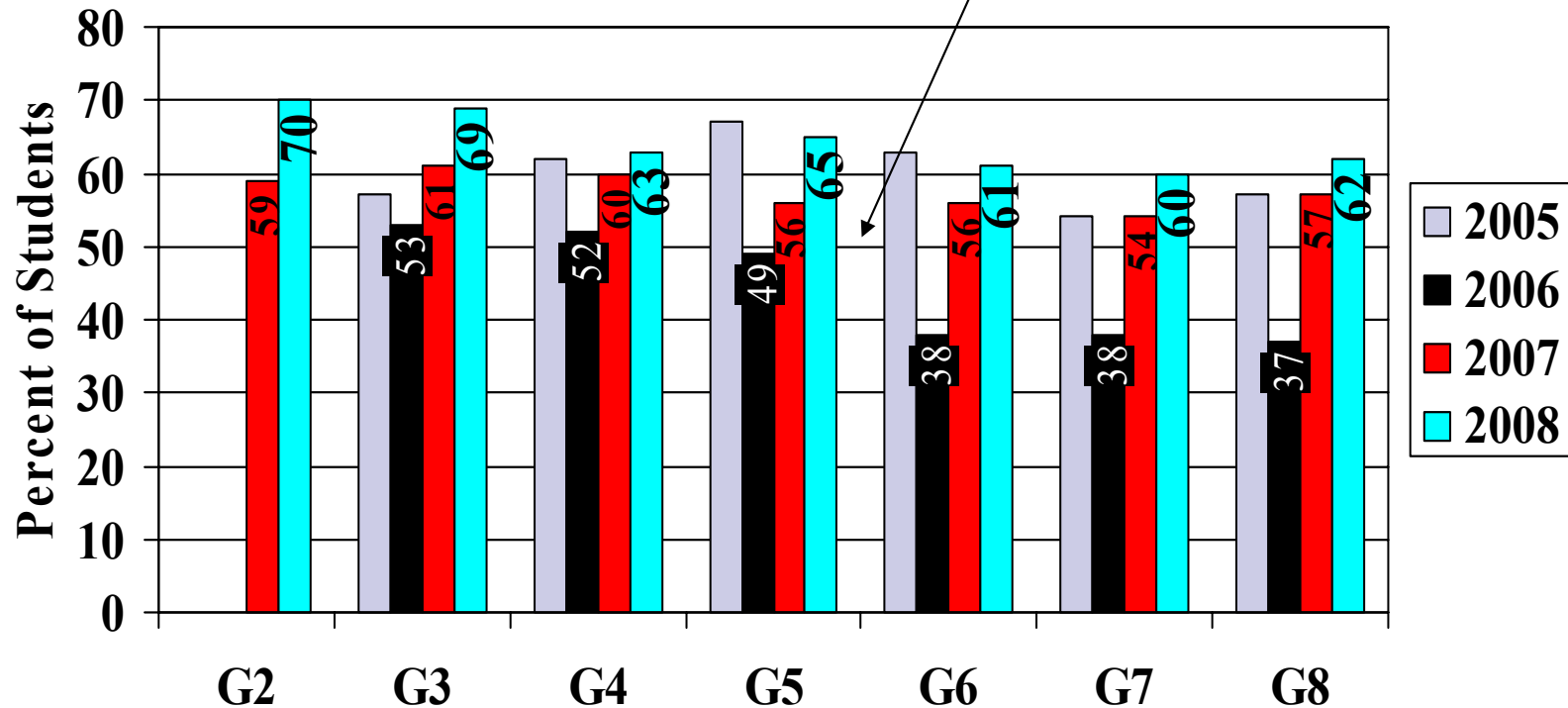


# District 621- Middle School NWEA Median Reading Scores by year



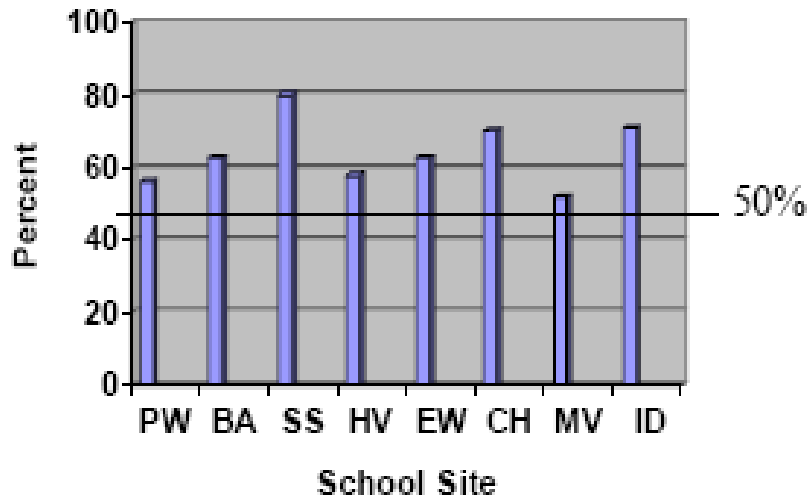
# Percent of Students meeting growth target: Reading by grade

Reading--NWEA Report 50% Benchmark



# Read 180 Intervention Effectiveness

**Read 180 Intervention**  
**Percent of Students Meeting or Exceeding Target Growth**



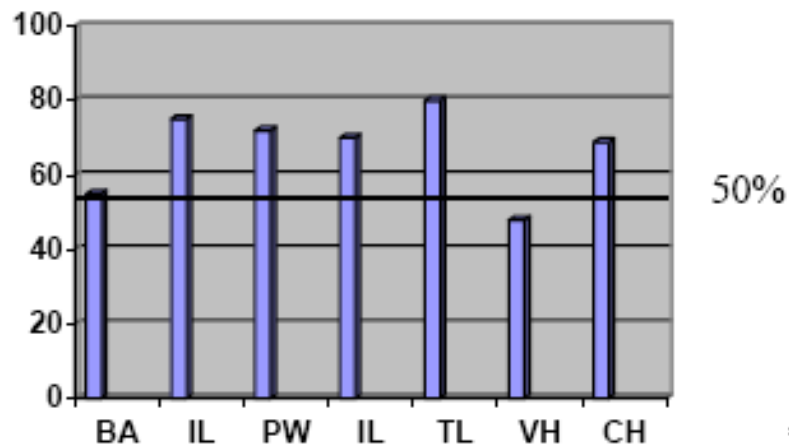
School	Student Count	% showing growth	% meet or exceed target growth
PW	18	100	56
BA	16	93	63
SS	10	100	80
HV	50	96	58
EW	47	96	63
CH	53	94	69
MV	27	81	53
ID	42	95	71

\*SS: 80% of students achieved 2 times their targeted growth

\*ID: 50% of students achieved 3 times their target growth

# Reading Interventions Effectiveness

**Reading Intervention Models**  
**Percent of Students Meeting or Exceeding Target Growth**



School	Student Count	% showing growth	% meet or exceed target growth
BA	49	100	55
IL	24	96	75
PW	54	98	72
SS	10	100	70
TL	59	97	80
VH	27	100	48
HV	*	*	*
CH	54	94	69

\*PW: Grade 2 SPIRE students achieved an average of 22 point gain (out of an average of 17 points)

\* HV & SS: Focused on Read 180 Intervention

# 2007-2008 Reading Results

## ■ Reading Achievement

- All grade levels show at least 60% of students meeting and exceeding target growth
  - District: 63% of students meet or exceed target growth (Goal was 57%)
    - Elementary: 65% of students met or exceeded target growth (Goal was 60%)
    - Middle: 60% of students met or exceeded target growth (Goal was 57%)
- Median performance is at least one grade level above national norms in grades 2-4 and two grade levels above national norms in grades 5-8

## ■ Reading Interventions Achievement

- 263 students participated in the Read 180 program, 95% of the students showed growth and 64% of the student met or exceeded their target growth.
- 277 students participated in other Reading Intervention Models, 97% of the students showed growth and 68% of the students met or exceeded their target growth.
- Students included in the intervention groups should exceed their growth target. Students should grow more than one year in one year's time.
- Interventions need to be maintained and in select cases expanded



# Key Messages

- The percentage of students meeting their growth target increased
- Mounds View Students perform at least one grade level-above national norms in Reading and Mathematics
- Focused Interventions, as well as high expectations for all students, result in higher achievement for students.