

THE VALENTINE VIEW

SCHOOL NEWSLETTER

Our Great School ♥ Our Great Community
May 15, 2009



Valentine Hills Elementary School
1770 West County Road E2, Arden Hills MN 55112
Nathan Flansburg, Principal
Sonnie Evans, View Editor/Writer
Article Submission Deadline: Tuesday Noon

School Office Phone & Voice Mail: 651-621-7800
Attendance Voice Mail: 651-621-7801
PTA Voice Mail: 651-621-7886
621 & VHES Web Site: www.moundsviewschools.org
All e-mail: firstname.lastname@moundsviewschools.org

SCHOOL CALENDAR...

Tue May 19

9:15-4:30 Spring Book Fair, LMC
Last day for student book check out

Wed May 20

9:15-6:00 Book Fair, LMC
4:00 4th/5th track meet w/PW @ VHES
9:45-11:25 1st gr bird banding

Thu May 21

9:15-8:00 Book Fair, LMC
9:45-10:45 5th gr Folk Song practice
4:00 4th gr track meet at ILES
6:30 p 5th gr Folk Song Program, gyms

Fri May 22

All LMC student books to be in by today

Mon May 25

MEMORIAL DAY—NO SCHOOL

Wed May 27

2:00 4th & 5th track meet at TLES

Dress Like Mr. J Day

Mon Jun 1

11:30-2:30 Mrs. Keillor's class to FMSC
12:20-2:20 5TH gr Celebration
2:30 Police K-9 demonstration for 5th graders
7:00 PTA meeting, rm 125

Tue Jun 2

9:45-11:30 4th & 5th gr orchestra students trip
to Presbyterian Homes for concert
12:30 - ? 5th gr track meet at IDHS

Thu Jun 4

9:45-3:30 5th to Science Museum
3:45 5th gr track leaves for meet at ILES

Fri Jun 5

9:30-11:30 AM K to Springbrook
1:30-3:30 PM K & K+ to Springbrook
9:45 Awards Ceremony, gyms
10:45-3:15 2nd gr to Como Zoo

Mon Jun 8

10:50-2:00 3rd gr to Tony Schmidt Park

Tue Jun 9

Last 2008-2009 school day

HAPPY SUMMER!!!

Parents: On June 9, your student should come home with his/her final report card for the year. If your student has any medications in the Health Office, you should pick it up on June 9 or make specific arrangements with Diane Cable at 651-621-7804.

PRINCIPAL POINTS — SERVICE LEARNING

Nathan Flansburg, VHES Principal

In the very difficult economic climate that we live in today, most charitable organizations have seen the economic hardships that people are facing up close as the number of requests for help has steadily increased. Many staff members at Valentine Hills have been working hard to teach our students about service learning --- and that service learning means more than just making a charitable donation. Our fourth and fifth graders worked with our art teacher, Mark Trampf, to make clay bowls that could be donated to the Empty Bowls Project. Held at Irondale High School, the Empty Bowls Project was run in conjunction with the district art fair to help raise awareness of world hunger, and to help support the Ralph Reeder Food Shelf. Students in fourth grade this year also participated in a field trip to Feed My Starving Children, where students packed specially formulated meals for starving children. These meals are then shipped to more than sixty countries around the world. As a building, we just completed our second H2O for Life fund raiser, and once again met our goal of raising \$1000 to help build water wells in third world countries. (Students are very excited to “pie” Mr. Jensen, and other teachers, as a reward for meeting their goal.) We also are entering our final food shelf drive of the year, by supporting our local Ralph Reeder Food Shelf, next week. We hope you are able to participate in this drive next week.

So why do we have a focus on service learning when many believe that the role of the school is to focus on math and reading success? While it is our role, and one we take very seriously, to promote educational growth in not only math and reading, but all academic areas, we also believe we are preparing students for becoming active and responsible citizens. An individual's character cannot be measured on a test, but we try to instill a sense of social responsibility in our students hoping they will one day become active members of our society.

FOOD SHELF DRIVE — MAY 18 - 25

SPONSORED BY STUDENT COUNCIL

Our final food shelf drive will be held the week of May 18 -25. The theme will be summer fun. We all know there are some folks who are having tough times currently. If you can help with anything — canned goods, personal items or household items and paper products — there will be area neighbors who will greatly appreciate your generosity. The

Ralph Reeder Food Shelf depends largely on Mounds View Public Schools to support their efforts. So, if you can send a few extra items to help carry the food shelf for a few more weeks this summer, it would be wonderful. Thank you!

There will be two classes who will enjoy root beer floats after this food shelf drive. How will that work? The K-1-2 class and the 3-4-5 class that brings in the most items for the food shelf drive will win root beer floats! Here are more ideas of things to bring — snacks, granola bars, s'mores, juice boxes, mac & cheese, peanut butter and jelly.

SAFETY PATROL OF THE YEAR

At the end of the school year, each elementary school names their "Safety Patrol of the Year". These students are honored at the Patrol Picnic. This year, Johnny Tereault was chosen. Johnnie has been a Safety Patrol for one year and has been an excellent role model for all the students and other Patrols and a great help to Mrs. Carlson, the VHES bus facilitator. He has been very conscientious about his responsibilities and has striven to ensure the safety of the bus riders on bus 42. Congratulations, Johnnie! We're very proud of you!

ANNUAL SAFETY PATROL PICNIC

The annual Safety Patrol Picnic was held at Aldrich Arena on May 12. VHES was able to celebrate the year with 54 Safety Patrols. It was a very fun day.

ALL 5TH GRADE FOLK SONG FESTIVAL PERFORMANCE THURSDAY, MAY 21

In their music classes, all fifth graders have been busily "working on the railroad", learning lyrics and tying on their bonnets in preparation for their upcoming celebration of American Folk Songs. Come enjoy the covered wagon, starry nights and campfire tunes as ye young fellows and lassies each perform a solo narrator or singing role. You can hear their tall tales and historic melodies twice in the VHS gym on Thursday, May 21. There will be a 6:30 p.m. performance for parents, family members and friends. The 9:45 a.m. performance will be for VHS students and any parents or family members who cannot attend the evening performance. There will be a dress rehearsal on Wednesday, May 20, beginning at 9:30 a.m. So grab your bandana or fiddle and we'll see you there!



Mounds View Public Schools Early Childhood Family Education Parent Advisory Committee announces its annual **Spring Pass-It-Along event**. The event is free and features gently used infant and toddler clothing, children's clothing up to size 16 and maternity wear, baby equipment, toys and books. Pass-It-Along is for families in need in the community and takes place at Pike Lake Education Center, 2101 14th St. N.W., New Brighton on Wednesday, May 27 from 9 am- 12 noon. Donations for Pass-It-Along will be accepted until May 22 at Pike Lake Center or Snail Lake Center. Call the Mounds View Public Schools ECFE office at 651-621-7420 for more information.

Beginning May 15, students must have enough money in their food accounts to cover their lunch each day. After May 18, students will not be allowed to have a negative balance. If there is not enough money in your child's account, they will receive a cheese sandwich and milk. We will be taking deposits through the end of the school year. If you have any questions, please call 651-621-7809.



TRACK HOT LINE CLARIFICATION! The track hot line is set up to be accessed this way:
651-621-6100, then enter extension 5626

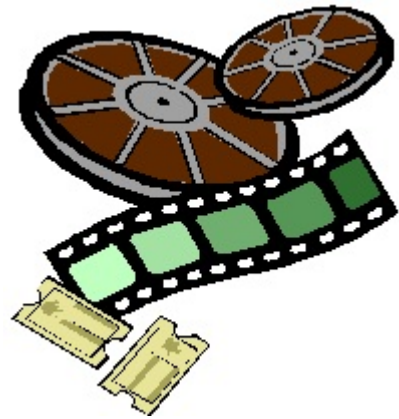
LIGHTS, CAMERA, BOOK FAIR!

Walk the red carpet into a world of imagination, adventure and fun!

You can find some great summer reading adventures in our Spring Book Fair!

BOOK FAIR HOURS:

Tuesday, May 19	9:15 a.m. - 4:30 p.m.
Wednesday, May 20	9:15 a.m. - 6:00 p.m. (Visit us before, during or after the track meet.)
Thursday, May 21	9:15 a.m. - 8:00 p.m. (Visit us before the 5 th grade Folk Song Program.)



Visit the Book Fair homepage through this link or visit the Valentine Hills web site and you will find the link there — a great way to preview books!

<http://bookfairs.scholastic.com/homepage/valentinehills>

ONE FOR BOOKS:

We are participating in a program called One for Books, which encourages the students to bring in loose change. When they bring their change to the Book Fair, they receive their very own Hollywood Boulevard handprint to place on our wall of fame. They also receive a raffle ticket and at the end of the week tickets will be drawn for prizes. All money collected for One for Books will be donated to the library to purchase books from the Book Fair.

Can't wait to see you there — get ready for summer reading!

2009-10 District Calendar

KEY

T = Teacher workday/
student assessment
and reporting

N = New teacher
workday

C = Curriculum dev.
NO SCHOOL

OC = Off calendar/
teacher workday - NO
SCHOOL

ET = Elementary
Transition - NO SCHOOL
FOR ELEMENTARY

ST = Secondary
transition - NO SCHOOL
FOR SECONDARY

kc = Kindergarten conf.-
no school for K

= Holidays/non-
school

R₁ = Early release for
students/no school for
PM kindergarten

R₂ = Early release for
students/no school for
AM kindergarten (PM
kindergarten attends in
the morning)

January 28 & 29

ELEMENTARY

January 28
Quarter End
School in session

January 29
Teacher work day
No school for elem.

SECONDARY

January 28
Early release, no school
p.m. for secondary

January 29
Quarter End
Teacher Workday
Early release, no school
p.m. for secondary

June 10 & 11

ELEMENTARY

June 10
Last elementary day

June 11
ET - No School

SECONDARY

June 10 & 11
Early release, no school
p.m., teacher work day
p.m.

June 11 is last
secondary day

July 2009

		1	2	3
6	7	8	9	10
13	14	15	16	17
20	21	22	23	24
27	28	29	30	31

August

3	4	5	6	7
10	11	12	13	14
17	18	19	20	21
24	25	26 N	27 N	28 N
31 T				

September

	1 C	2 T	3 T	4
7 Labor Day	8 First student day	9	10	11
14	15	16	17	18
21	22	23	24	25
28	29	30		

October

		1	2	
5	6	7	8	9
12	13	14	15 Educ. MN Prof. Conf.	16
19	20	21	22	23
26	27	28	29	30

November

2	3	4	5 R ₁	6 Qtr. End T
9	10	11	12	13
16	17	18	19	20 kc
23 Parent/Tchr. Conferences	24 C	25	26 Thanksgiving Break	27
30				

December

	1	2	3	4
7	8	9	10	11
14	15	16	17	18
21	22	23 OC	24	25 Winter Break
28	29 Winter Break	30	31	

January 2010

				1 Winter Break
4	5	6	7	8
11	12	13	14	15
18	19	20	21	22
25	26	27	28 SEE KEY TO LEFT	29

February

1 ST	2	3	4	5
8	9	10	11	12
15 C Pres. Day	16	17	18	19
22	23	24	25	26

March

1	2	3 kc	4 Parent/Tchr. Conferences	5
8	9	10	11	12
15	16	17	18	19
22	23	24	25	26
29	30	31		

April

			1	2
5	6	7	8 R ₂ Qtr. End	9
12	13	14	15	16
19	20	21	22	23
26	27	28	29	30

May

3	4	5	6	7
10	11	12	13	14
17	18	19	20	21
24	25	26	27	28
31 Mem. Day				

June

	1	2	3	4
7	8	9	10	11
14	15	16	17	18
21	22	23	24	25
28	29	30		