

WINTER/SPRING 2019



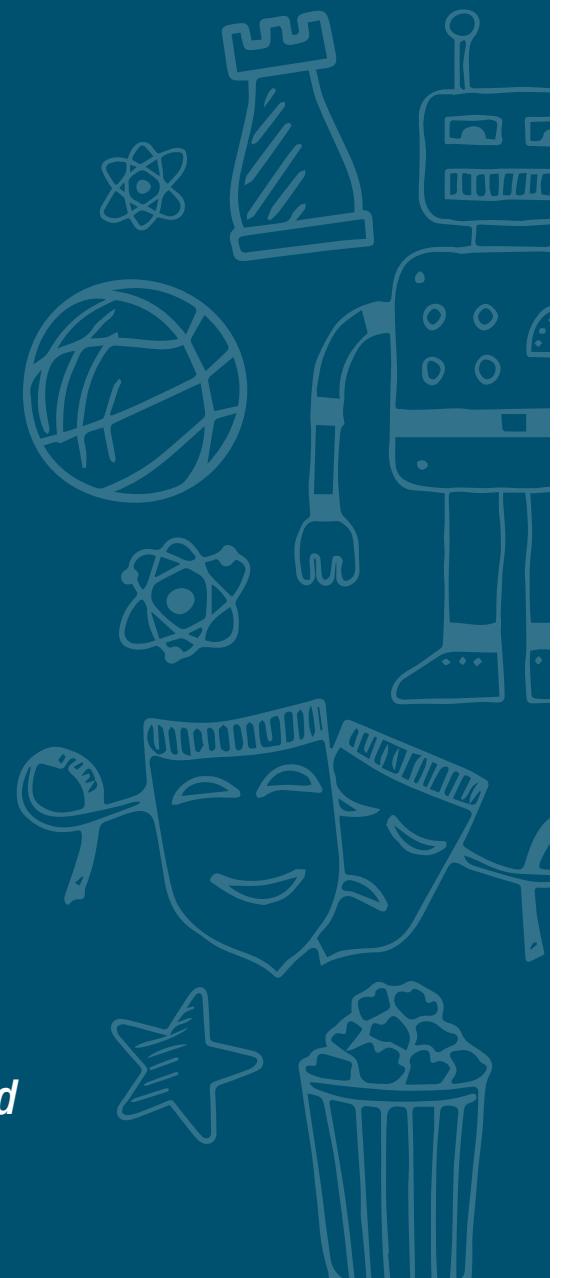
Youth Activities



Bel Air

FENCING, ROBOTICS, CODING,
DRAWING, CHESS CLUB,
PAINTING, GAMING, THEATER,
FIELD TRIPS + MORE!

Online registration is open December 3, 2018, at
www.moundviewschools.org/RegisterCommunityEd



WINTER/SPRING 2019

Theater Classes

NEW! CHARACTER WORKSHOPS

Drama Kids International presents this new class which is devoted to learning the tricks of characterization. Learn how to use your voice, your body and your imagination to bring characters to life on stage. Whether you are an experienced actor or brand new to drama, this class will make you feel confident acting-out any role. Register for this class and feel ready to perform in an informal performance on the last day of class. *Presented by Drama Kids International*

GRADES 1-5

Wed. Jan. 16–Mar. 6 3:20-4:20 p.m.
\$115/student

NEW EVENING COURSE! MYSTERY UNDER THE BIG TOP

At Chippewa Middle School

Clowns, acrobats, jugglers and more... this show is filled with all sorts of characters ready to put on an amazing circus performance. While the performers practice their acts, someone tries to sabotage the whole show. What will these circus performers do to solve the mystery and put on a spectacular show? Whether it is your first play or your fifth play, Drama Kids International presents a course that fits all abilities. Everyone gets a part. *Presented by Drama Kids International*

GRADES 1-5

Tues. Apr. 2–May 21 6:30-7:30 p.m.
\$144/student

STEM Classes

NEW! INTRO TO SCRATCH CODING

This class introduces younger students to the basics of coding using MIT's award winning Scratch Coding principles of object-oriented programming. Scratch is a powerful yet simple block-based language. Students will learn how to use Scratch to create and program sprites, backgrounds and interactive scripts. *Presented by Computer Explorers*

GRADES 1-4

Fri. Jan. 11–Feb. 8 3:20-4:50 p.m.
\$101/student

WIZARDS SCHOOL

Join Science Explorers as they investigate a wizard's laboratory. Students become apprentices to learn the science behind magic. They will harness electricity to make a wand and explore the secret world of alchemy to create scientific potions in this hands-on imaginative class. *Presented by Science Explorers*

GRADES 1-5

Mon. Jan. 28–Feb. 11 3:20-4:50 p.m.
\$50/student

ROBOTIC BUILDERS: BATTLE BOTS

Let the battles begin! Designed by the experts at MIT, LEGO WeDo Robotics' unique system teaches students about simple machines, engineering, programming and so much more. In this class, students will construct a catapult, ninja star, tank, battle axe, crossbow, battering ram, fighter plane and more. *Presented by Computer Explorers*

GRADES 3-5

Tues. Feb. 12 - Mar. 5 3:20-4:50 p.m.
\$101/student

MINECRAFT CREATIVE

Ignite your student's imagination with this class. At its core, Minecraft is an open world that promotes creativity, collaboration and problem-solving. We will be using Minecraft for the PC in creative mode. This class explores design and building challenges within the game of Minecraft. Students should bring their love of Minecraft, and be ready for fun and educational challenges. *Presented by Computer Explorers*

GRADES 1-5

Wed. Mar. 27–Apr. 17 3:20-4:50 p.m.
\$101/student

NEW EVENING COURSE! STAR WARS ROBOTICS

At Edgewood Middle School

Students will build new models and projects using the LEGO WeDo Robotics systems. Designed by the experts at MIT, this unique system teaches students about simple machines, engineering, programming and so much more. Students will build LEGO models featuring motors, tilt sensors, motion detectors, USB Robotics Hub and more. Models include All Terrain Scout Transport (AT-ST) bipedal, Spinning Tie Fighter and other out-of-this-world models. *Presented by Computer Explorers*

GRADES K-3

Tues. Apr. 23–May 7 6:00-7:30 p.m.
\$76/student

Art Classes

SPARKLE SPECTACULAR!

Is your child silly for sparkles and giddy about glitter? In this class, students will go sparkle crazy! They'll create multiple projects all covered with sparkles and glitter aplenty. They'll learn to draw, play with clay and more as they work with a variety of different types of clay, paint and other spectacularly sparkly art supplies.

Presented by KidsCreate Studio

GRADES 1-5

Thurs. Feb. 14–Mar. 7 3:20-4:20 p.m.
\$57/student

NEW EVENING COURSE!

PARENT & CHILD PAINT NIGHT

At Highview Middle School

Create a masterpiece with your child!

Prepare for an evening filled with fun!

You and your child will follow easy step-by-step instructions as you create matching paintings. Each parent and child will create their own masterpiece on a real canvas board. *Presented by KidsCreate Studio*

GRADES K-5

Tues. Mar. 12 6:30-8:00 p.m.
\$30/parent & student pair

CANVAS & CLAY

In this class, your child will experiment with many different types of art while learning simple step-by-step painting and clay techniques. They will make 3D bears, owls that glow-in-the-dark, a scratchboard painting of a cat and so much more.

Presented by KidsCreate Studio

GRADES 1-5

Tues. Mar. 26 - Apr. 16 3:20-4:20 p.m.
\$57/student

Sports

NEW EVENING COURSE!

FENCING

At Island Lake Elementary School

Join the fast-growing Olympic sport of fencing. Each Youth Enrichment League (YEL) fencing class follows four basic components: 1. Teach It! Hall of Fame Olympic fencing coach Ro Sobalvarro crafts the lessons and curriculum. 2. Practice It! Students pair up to practice a fencing move or concept, rotate partners and repeat. 3. Move It! Students then participate in fencing matches using only the moves taught so far. 4. Play It! Spend 10-15 minutes of each class fencing with multiple fencers at their skill level. All equipment is provided.

GRADES 2-8

Winter Session:

Tues. Jan. 29-Mar. 12 6:15-7:15 p.m.

Spring Session:

Tues. April 2-May 1 6:15-7:15 p.m.

*\$89/student per session
(includes in-class tournament)*

Students may receive an invitation to the spring Fencing Championship with students from all over the state. There is a separate fee. Students are encouraged, but not required, to attend.

Strategy Games

CHESS CLUB

Beginner and intermediate players are encouraged to join this club where they will meet and interact with other chess players at their school to play on a weekly basis. Experienced chess players will occasionally visit to help club members improve their skill level.

GRADES 1-5

Fri. Jan. 4 – May 10 7:45-8:30 a.m.
\$57/student

NEW!

NON-SCHOOL-DAY FIELD TRIPS

Available to students in all grades. All-day field trips are from 8:30 a.m. to 5:00 p.m. Drop-off and pick-up is at the Mounds View High School gymnasium. Students will be required to bring a bag lunch unless otherwise noted. Space is limited. Please register early.

JANUARY 17

GRADES K-3

Minnesota Children's Museum & Gym Games

\$55 per student

GRADES 4-8

Snow Tubing at Wild Mountain & Gym Games

\$55 per student

Please note: For the Wild Mountain field trip students must bring their own winter coat, snow pants, hat and gloves/mittens and a completed release form.

FEBRUARY 18

GRADES K-3

Crayola Experience & Gym Games

\$55 per student

GRADES 4-8

Feed My Starving Children & Grand Slam

\$55 per student

MARCH 14

GRADES K-8

Nickelodeon Universe

\$65 per student

APRIL 19

GRADES K-8

Science Museum & Omni Movie

\$55 per student

WINTER/SPRING 2019

REGISTRATION OPENS SOON!

Online registration is open **December 3, 2018**, at www.moundsviewschools.org/RegisterCommunityEd

Additional Program Information:

Registration

Classes are on a first-come, first-served basis. Space is limited, please register early.

Refunds

Clubs, classes and non-school-day field trip refunds will be granted up to 7 days prior to the start date.

Scholarships

Scholarships are available for some programs. Please contact Community Education for more information.

Accommodation needs

Individuals with accommodation needs are welcome in any activity and may bring a helper at no extra charge if needed. Please indicate needs when registering.

Cancellations

Community Education reserves the right to cancel a class. When cancellations occur, participants will be notified and a full refund will be issued.



Youth Activities

COMMUNITY EDUCATION

Mounds View Public Schools

Questions?

Community Education offers a variety of District activities for all elementary school students in grades 1-5. All courses take place at Bel Air Elementary School unless otherwise noted. If you have questions please contact Community Education:

651-621-6020

CommunityEd@moundsviewschools.org

SAVE THE DATE!

Registration for Community Education summer camps and activities will open **March 1, 2019**. Watch your mailbox in February for the new Community Education summer catalog.

FRIDAY, JANUARY 11
FROZEN
SING-A-LONG
6:30-8:30 P.M.



FRIDAY, FEBRUARY 8
INCREDIBLES 2
6:30-8:30 P.M.

NEW! FAMILY MOVIE & POPCORN NIGHTS

At Chippewa Middle School's auditorium

Each family member will receive a personal bag of popcorn upon entry. Additional concessions including soda, juice, candy and more will be available for purchase before the movie. Family movie night registration must include at least one child 2+ years old and one adult.

Popcorn and a movie is \$2 per person or \$10 for a family of 5+

