



Mounds View

PUBLIC SCHOOLS

Facilities Task Force update

January 24, 2017



Background

- 39-member group
 - Community members, staff, circle of support.
 - Advisory to admin. and Board.
 - Consultative responsibility in developing recommendations.
- In response to increasing enrollment . . .
 - Directed to complete a capacity audit to compare current facility and program needs to the growing student body.
- Meeting monthly, September - February



Focus areas

- Enrollment & Capacity
- Facilities: Quality & Condition
- Facilities: Instructional Program
- Community & Co-curricular Spaces
- Safety & Security



Enrollment & Capacity

- Demographic study: Hazel Reinhart
- Elementary & Secondary Capacity Study: Wold Architects



Enrollment & Capacity

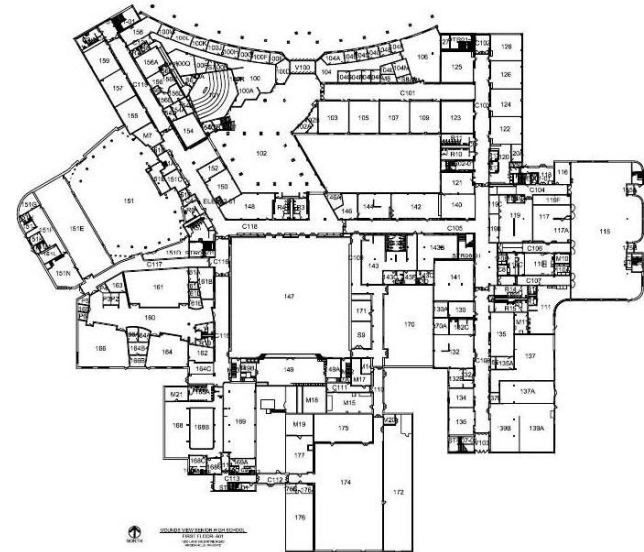
“Elementary & middle schools need increased capacity of approximately 1,000 - 1,700 additional students over the next 10 years.”

“Adding flexible space to all sites is the best approach to allow the District to effectively & efficiently address enrollment & capacity issues into the future.”



Facilities: Quality & Condition

- District maintenance
- Major mechanical and HVAC systems
- Tired iron & brick
- Technology infrastructure



Facilities: Quality & Condition

“Rapidly aging facilities have required **extensive ongoing maintenance** efforts.”

“Despite maintenance efforts, the increased use of buildings & the 15-year gap since the last major upgrade have led to increased **strain & failures** of portions of the systems.”



Facilities: Instructional Program

- Flexible learning spaces
- Mismatch between current facilities & instructional needs
- Classroom size
- 21st Century learning spaces



Facilities: Instructional Program

“Modern instructional spaces have evolved. The District’s buildings are **no longer optimal** for a high quality of student instruction & personalization.”

“Despite modifications, schools are **close to the limit** of what they can reasonably provide students in terms of instruction spaces without a major reinvestment.”



Community & Co-curricular Spaces

- Co-curricular model & needs
- Athletic facilities study
- Student connectedness & participation
- Community indoor & outdoor spaces



Community & Co-curricular Spaces

“In our high schools, **cramped & outdated classrooms** are the norm, along with **insufficient activity spaces.**”

“Despite efforts, **the District lags** other high-performing & community-supported school districts that have undertaken their own facilities initiatives resulting in convenient, multi functional state-of-the-art facilities.”



Safety & Security

- Secure buildings
- Visitor management
- Camera systems
- Controlled access systems
- Need for common areas with supervision



Safety & Security

“Despite recent security enhancements, consultants & law enforcement officials offered recommendations for **strengthening the security** for each building.”

“As any District-wide facilities improvements are contemplated, **further safety & security enhancements** must be considered in the scope of future work.”



Next steps

- Facilities Task Force meets through February.
- Task Force will continue to make statements of confirmation & consultation.
- Task Force will present report to School Board in March.



District Center relocation

- 4570 Victoria Street N. Shoreview
 - Former Ramsey County Library
- Renovations this spring
- Occupation this summer
- Makes room for expansion of early childhood 4-year-old programs at Snail Lake Education Center

