



Gluten Free Hot Dog Bun I/W

Product Specifications:

DI Code	DOT Code	UPC	Pack Size	Case Dimension	Net. Weight	Gross Weight	Cube	Cases Pallet
300154	544550	03007403001549	24 / 3.5 oz.	10.75 x 10.75 x 5.75	5.3	5.9	0.38	120
Length	Width	Height	Diameter	TL X HL	Shelf Life	Storage Temp		
6"	2 1/4"	1 1/2"		12 x 10	180 Days	Frozen		

Nutrition Facts

Serving Size 1 Roll (113g)
Servings Per Container 24

Amount Per Serving

Calories 250 **Calories from Fat** 25

% Daily Value*

Total Fat 3g **5%**

Saturated Fat 0g **0%**

Trans Fat 0g

Cholesterol 0mg **0%**

Sodium 410mg **17%**

Total Carbohydrate 59g **20%**

Dietary Fiber 9g **36%**

Sugars 4g

Protein 4g

Vitamin A 0% • Vitamin C 0%

Calcium 8% • Iron 6%

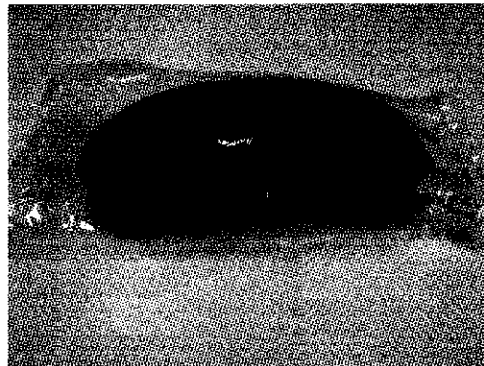
*Percent Daily Values are based on a 2,000 calorie diet. Your daily values may be higher or lower depending on your calorie needs:

	Calories:	2,000	2,500
Total Fat	Less than	65g	80g
Sat Fat	Less than	20g	25g
Cholesterol	Less than	300mg	300mg
Sodium	Less than	2,400mg	2,400mg
Total Carbohydrate		300g	375g
Dietary Fiber		25g	30g

Ingredients:

Water, Brown Rice Flour, corn starch, tapioca starch, eggs, corn dextrin, sugar, canola oil, honey, potato flour, baking powder, yeast, rice bran, xanthan gum, salt, vinegar, enzymes (Calcium Sulfate & Enzymes).

Allergens: Egg



Cooking Instructions:

Allow bread to thaw for two hours.

Lower Sodium
replacing Apperts # 2450419
Morrell # 7010002787

Apperts #
1757273

Smithfield


GF

May 11, 2015

Good food. Responsibly.®

To: Valued Customer

Subject: Child Nutrition Label for John Morrell Lower Sodium Beef Franks 70100-02856; 10lbs.



**70100
02856**

Nutrition Facts
Serving Size 1 frank (57g)
Servings Per Container 80

Amount Per Serving

Calories 180 Calories from Fat 150

	% Daily Value*
Total Fat 17g	26%
Saturated Fat 7g	35%
Cholesterol 35mg	12%
Sodium 340mg	14%
Total Carbohydrate 1g	0%
Dietary Fiber 0g	0%
Sugars 1g	
Protein 6g	12%
Vitamin A 0% • Vitamin C 0%	
Calcium 0% • Iron 4%	

*Percent Daily Values are based on a diet of other people's secrets.

LOWER SODIUM BEEF FRANKS
40% LESS SODIUM THAN USDA DATA FOR BEEF FRANKS


Ingredients: Beef, Water, Sorbitol, Potassium Chloride, Flavoring, Salt, Sodium Phosphates, Sodium Erythorbate, Sodium Nitrite, Extract of Paprika.

CN 084105

EACH 2.00 OZ. FULLY COOKED FRANKFURTER PROVIDES 2.00 OZ. EQUIVALENT MEAT FOR CHILD NUTRITION MEAL PATTERN REQUIREMENTS. (USE OF THIS LOGO AND STATEMENT AUTHORIZED BY THE FOOD AND NUTRITION SERVICE, USDA 6/12).

CN CN

NET WT. 10 LBS.



KEEP FROZEN

P8001044

JOHN MORRELL & CO.,
P. O. BOX 405020,
CINCINNATI, OH 45240
www.johnmorrell.com

Maria E. Bunke

Maria Bunke
Labeling Specialist
Smithfield Foods

CONFIDENTIALITY NOTICE: This communication (including attachments) is confidential and may contain confidential and/or privileged material. If you are not the intended recipient, or the employee or agent responsible for delivering it to the intended recipient, then you are hereby notified that the dissemination, distribution or copying of this communication is prohibited. If you received this communication in error, please notify the sender immediately by reply email and then delete this communication and destroy all copies thereof.

Lower Sodium
replacing Apperts # 2450419
Morrell # 7010002787

Apperts #
1757373

Smithfield


GF

May 11, 2015

Good food. Responsibly.®

To: Valued Customer

Subject: Child Nutrition Label for John Morrell Lower Sodium Beef Franks 70100-02856; 10lbs.



**70100
02856**

LOWER SODIUM BEEF FRANKS
40% LESS SODIUM THAN USDA DATA FOR BEEF FRANKS

Ingredients: Beef, Water, Sorbitol, Potassium Chloride, Flavoring, Salt, Sodium Phosphates, Sodium Erythorbate, Sodium Nitrite, Extract of Paprika.

Nutrition Facts
Serving Size 1 frank (57g)
Servings Per Container 80

Amount Per Serving

Calories 180 Calories from Fat 150


	% Daily Value*
Total Fat 17g	26%
Saturated Fat 7g	35%
Cholesterol 35mg	12%
Sodium 340mg	14%
Total Carbohydrate 1g	0%
Dietary Fiber 0g	0%
Sugars 1g	
Protein 6g	12%
Vitamin A 0% • Vitamin C 0%	
Calcium 0% • Iron 4%	

*Percent Daily Values are based on a diet of other people's secrets.

084105

EACH 2.00 OZ. FULLY COOKED FRANKFURTER PROVIDES 2.00 OZ. EQUIVALENT MEAT FOR CHILD NUTRITION MEAL PATTERN REQUIREMENTS. (USE OF THIS LOGO AND STATEMENT AUTHORIZED BY THE FOOD AND NUTRITION SERVICE, USDA 6/12).

NET WT. 10 LBS.



KEEP FROZEN

P8001044

JOHN MORRELL & CO.,
P. O. BOX 405020,
CINCINNATI, OH 45240
www.johnmorrell.com

Maria E. Bunke

Maria Bunke
Labeling Specialist
Smithfield Foods

CONFIDENTIALITY NOTICE: This communication (including attachments) is confidential and may contain confidential and/or privileged material. If you are not the intended recipient, or the employee or agent responsible for delivering it to the intended recipient, then you are hereby notified that the dissemination, distribution or copying of this communication is prohibited. If you received this communication in error, please notify the sender immediately by reply email and then delete this communication and destroy all copies thereof.