



## Bongards Yellow Processed American Loaf - 6/5#

Bongards Yellow Processed American Cheese comes in a 5 pound loaf with 6 loaves per case. This loaf is best used for quesos, soups, and dips.

### NUTRITIONAL FACTS

28g Serving Size  
480 Servings Per Case  
100 Calories per Serving  
8g Total Fat  
5g Saturated Fat  
0g Trans Fat  
25mg Cholesterol  
370mg Sodium  
2g Total Carbs  
0g Dietary Fiber  
1g Sugars  
5g Protein  
0% Vitamin D  
10% Calcium  
0% Iron  
2% Potassium

Ingredients: Cultured Milk and Skim Milk, Cream, Sodium Phosphate, Salt, Color Added (if colored), Lactic Acid, Enzymes

Contains: Milk

PRODUCT CODE	20263-1
UPC CODE	0-71078-10502-7
GTIN	1-00-71078-10502-4
CASE DIMENSIONS	11.875" X 11.125" X 8.125"
CASE CUBE	0.621 CUBIC FEET
NET WEIGHT	30.00 LBS.
GROSS WEIGHT	31.55 LBS.
T1 X H1	12 X 5
CASES/PALLET	60
SHELF LIFE	365 DAYS
REFRIGERATION	KEEP REFRIGERATED
STORAGE TEMP	33-40 DEGREES





Nancy Rust <nancy.rust@moundsvIEWSchools.org>

---

## Gluten Free

2 messages

---

**Nancy Rust** <nancy.rust@moundsvIEWSchools.org>  
To: info@bongards.com

Tue, Nov 27, 2018 at 12:31 PM

Hi,  
We use your 30# loaves of the processed American cheese. Can you tell me if this product is gluten free and safe to serve to our celiac students?

Thank you,  
Nancy

--  
Nancy Rust  
Nutrition Services  
Mounds View District Center  
4570 Victoria Street North  
Shoreview, MN 55126

Ph. (651) 621-6025  
Fax (651) 621-6026

---

**Bongards Creameries** <Info@bongards.com>  
To: Nancy Rust <nancy.rust@moundsvIEWSchools.org>

Tue, Nov 27, 2018 at 1:12 PM

Nancy,

Yes, all of our products are gluten free.

Sincerely,

The Bongards Team

**From:** Nancy Rust [mailto:nancy.rust@moundsvIEWSchools.org]  
**Sent:** Tuesday, November 27, 2018 12:32 PM  
**To:** Bongards Creameries <Info@bongards.com>  
**Subject:** Gluten Free

[Quoted text hidden]



# Products

- Foodservice
- Retail
- Convenience
- Schools

[Home](#) / [Products](#)

## Smart Picks™ Flame Grilled Chopped Beef Steak CN

 Email

 Single Page

 Full Specs

Item #:	Pieces Per Case:	Piece Size (oz.):	Case Weight (lb.):
3860	140	2.30	20.13

**Data Generated:** 11/26/2018

**Data Valid As Of:** 5/3/2018

**Description:** Fully cooked, lightly seasoned, chopped beef steak (80/20). Loose bite. Homestyle shape with charmarks. CN labeled.

**Features & Benefits:** Great for Kids-high quality, CN labeled, chopped beef steak; formulated to meet strict nutrition guidelines. Freshly Made Taste-loose bite; flamegrilled and charmarks for a freshly grilled taste and appearance; lightly seasoned, chopped beef steak; consistent taste, product size and quality; homestyle shape; IQF to lock in freshness. High Quality USDA-Approved Raw Materials-made from USDA beef trim; all meat-no added water, binders or fillers. Easy Preparation-tastes and holds better than burgers cooked from raw; feed more customers with faster speed of service during peak times; less waste; minimal cleanup, grease and shrinkage. Reduced Labor Costs-just heat from frozen on a flat top grill, in a conventional or convection oven or in a microwave; no thawing necessary; easy clean up. Decreased Food Safety Concerns-fully cooked to USDA HACCP requirements utilizing calibrated thermometers; enhanced food safety; reduces cross contamination risk in your kitchen.

**Technical Label Name:** CN Flamebroiled Beef Steaks (Chopped & Formed) Caramel Color Added \*GLUTEN FREE\*

**Brand:** The Pub Chp Bf Stk Class Cir Z

**Packaging Type:** BULK-LINER

**Master Case GTIN:** 00071421038606

**Master Case Gross Weight:** 21.50200

**Master Case Length:** 19.88000

**Master Case Width:** 13.00000

**Master Case Height:** 6.63000

### Nutrition Facts:

**Serving Size:** 2.30 OZ (64 g)  
**Servings Per Container:** 140

Calories / Calories from Fat: 150 / 90

% Daily Value \*\*

Total Fat	11 g	17%
Saturated Fat	4.5 g	23%
Trans Fat	0.5 g	
Cholesterol	45 mg	15%
Sodium	260 mg	11%
Total Carbohydrate	0 g	0%
Dietary Fiber	0 g	0%
Sugars	0 g	
Protein	12 g	
Vitamin A		0%
Vitamin C		0%
Calcium		0%
Iron		6%

\*\* Percent Daily values are based on a 2,000 calorie diet. Your daily values may be higher or lower depending on your calorie needs.

The trans fats reported on this product's nutrition facts panel are naturally occurring.

**Master Case Cube:** 0.99160

**Cases/Layer:** 7

**Cases/Pallet:** 42

**Layers/Pallet:** 6

**Frozen Shelf Life (days):** 455

**Refrigerated Shelf Life (days):** 7

**CN Credit:** 2 OZ MMA BEEF

**Preparation Method:**

Conventional Oven: From frozen state, bake in a preheated conventional oven at 350 degrees f for 12 minutes.

Convection Oven: From frozen state, bake in a preheated convection oven at 350 degrees f for 8 minutes

Microwave: On full power for 1-2 minutes. Microwave ovens vary. Times given are approximate.

**Ingredient Statement:** INGREDIENTS: Ground Beef (Not More Than 20% Fat), Seasoning (Hydrolyzed Corn Protein, Dextrose, Salt, Flavorings), Sodium Phosphates, Caramel Color.

**CN Equivalency Statement:** 3860

**Master-Case-Labels:** 3860

PERFECT SLICE CRISPY TURKEY BACON FULLY COOKED



SKU 870706



PACKAGING

Case UPC Code:	10042222870709	Unit Size:	006/50SLC SL
Units Per Case:	6	Pallet Tier:	6
Shelf Life:	365 DAYS USE OR FREEZE BY	Pallet High:	15
Case Length (imperial):	17.3 IN	Catch Weight:	N
Case Width (imperial):	15.8 IN	Case Net Weight (imperial):	3.50 LB
Case Height (imperial):	3.9 IN	Case Gross Weight (imperial):	4.94 LB
Servings Per Case:		Case Cube (feet):	0.617 FT

INGREDIENTS

Ingredients: White Turkey, Mechanically Separated Turkey, Turkey Fat, Salt, Sugar, Water, Contains 2% or less Smoke Bacon Flavor (Maltodextrin, Autolyzed Yeast Extract, Natural Flavor (Contains Natural Smoke Flavor), Sugar, Salt), Bacon Type Flavor (Maltodextrin, Gum Acacia, Natural And Artificial Flavoring, Hydrolyzed Corn Protein, Yeast Extract, Modified Corn Starch, Xanthan Gum, Succinic Acid), Natural Smoke Flavoring, Sodium Erythorbate, Sodium Nitrite, Natural Flavoring, Vegetable Oil.

NUTRITION

Nutrition Facts

Serving Size 0.1 OZ (5g)

<b>Amount Per Serving</b>	
Calories 25	Calories from Fat 20
Calories (100G) 500	Calories from Fat (100G) 400

	Per 100 G	% Daily Value*
<b>Total Fat</b> 2 g	40 g	3%
Saturated Fat 0.5 g	10 g	3%
Trans Fat 0 g	0 g	
<b>Cholesterol</b> 5 mg	100 mg	2%
<b>Sodium</b> 110 mg	2,200 mg	5%
<b>Total Carbohydrate</b> 0 g	0 g	0%
Dietary Fiber 0 g	0 g	0%
Sugars 0 g	0 g	
<b>Protein</b> 2 g	40 g	

	Per 100 G		Per 100 G
Vitamin A 0 %	0	•	Vitamin C 0 % 0 %
Calcium 0 %	0 %	•	Iron 0 % 0 %
Vitamin B6 0 %	0 %	•	Vitamin B12 0 % 0 %

\*Percent Daily Values are based on a 2,000 calorie diet. Your daily values may be higher or lower depending on your calorie needs.

	Calories:	2,000	2,500
Total Fat	Less than	65g	80g
Sat Fat	Less than	20g	25g
Cholesterol	Less than	300mg	300mg
Sodium	Less than	2,400mg	2,400mg
Total Carbohydrate		300g	375g
Dietary Fiber		25g	30g

Calories per gram:  
Fat 9 • Carbohydrate 4 • Protein 4

FEATURES AND BENEFITS

- Fully Cooked and Pre-Crisped for Ease of Preparation
- Consistent Size Slices for Portion Control and Excellent Coverage
- Gas Flushed Packages Allow Use of One Slice or Many at a Time
- Perfect Addition to Any Sandwich
- Extended Shelf Life to Eliminate and Expiration Waste
- 100% Useable Bacon Slices - No Yield Loss

SPECIFICATIONS

- Fully Cooked
- Pre-Crisped
- Consistent Size Slices
- Easy Preparation
- 50 Slices Per Package
- 6 Gas Flush Packages Per Case
- Refrigerated
- Extended Shelf Life



Nancy Rust &lt;nancy.rust@moundsvIEWSchools.org&gt;

---

**Re: [EXTERNAL] Contact form Jennie-O Turkey Store Foodservice Website**

1 message

---

**bamcchesney@j-ots.com** <bamcchesney@j-ots.com>

Tue, Nov 27, 2018 at 9:12 AM

To: nancy.rust@moundsvIEWSchools.org

#870706 contains no gluten

Bobbie McChesney  
Foodservice Sales Coordinator

Tel: (320) 231-7118

Fax: (320) 231-2272

[bamcchesney@j-ots.com](mailto:bamcchesney@j-ots.com)Our Cultural Beliefs: Safety First, Results Matter, Creat Solutions, Grow  
Talent, Speak Up, Build Bridges, Challenge YourselfFrom: [nancy.rust@moundsvIEWSchools.org](mailto:nancy.rust@moundsvIEWSchools.org)To: [bamcchesney@j-ots.com](mailto:bamcchesney@j-ots.com)

Date: 11/27/2018 08:51 AM

Subject: [EXTERNAL] Contact form Jennie-O Turkey Store Foodservice  
WebsiteContact  
from  
Jennie-O  
Turkey  
Store  
Foodservice  
WebsiteContact  
Information

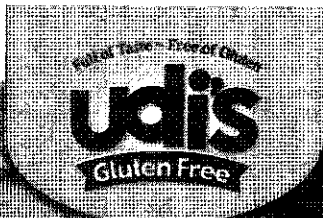
Name nancy rust

Company Mounds View Public Schools

Address 4570 N. Victoria Street  
Shoreview, MN 55126

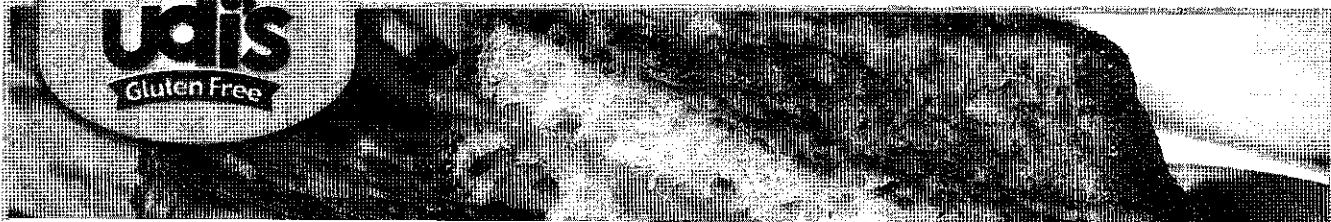
Phone 6516216025

Email [nancy.rust@moundsvIEWSchools.org](mailto:nancy.rust@moundsvIEWSchools.org)Comments Hi, Can you tell me if your Perfect Slice Crispy Turkey Bacon Fully Cooked #870706 is gluten free and safe  
to serve to our Celiac students?? Thank you, Nancy



[Products](#) [Solutions by Segment](#) [Resources](#) [Contact Us](#) [Login](#)

[Cart](#)



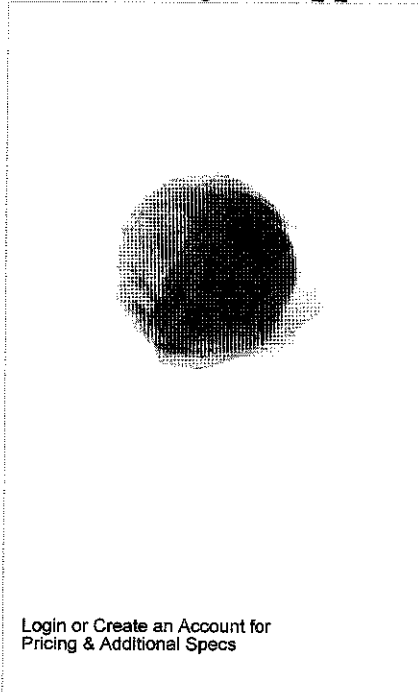
[Home > Products](#)

**PRODUCT CATEGORIES**

- [New Products](#)
- [Tortillas](#)
- [Chips](#)
- [Granola Bars](#)
- [Breads](#)
- [Buns & Rolls](#)
- [Pizza](#)
- [Bagels](#)
- [Cookies & Brownies](#)
- [Muffins](#)
- [Granola \(GF\)](#)
- [Artisan Granola \(Non GF\)](#)
- [Glutino](#)

# 4" Classic Hamburger Buns

## Individually Wrapped 24pk



### Description

Our 4" soft, golden buns accompany your much-loved menu ingredients, be it a classic burger or a savory deli sandwich! These buns are larger than our retail pack and are individually wrapped to suit a variety of foodservice operational platforms.

### Ingredients

**INGREDIENTS:** WATER, TAPIOCA STARCH, BROWN RICE FLOUR, NON-GMO CANOLA OIL, EGG WHITES, RESISTANT CORN STARCH, CANE SYRUP, TAPIOCA MALTODEXTRIN, POTATO FLOUR, DRIED CANE SYRUP, TAPIOCA SYRUP, YEAST, SUGARCANE FIBER, SALT, GUM (XANTHAN GUM, SODIUM ALGINATE, GUAR GUM), CULTURED CORN SYRUP SOLIDS AND CITRIC ACID (NATURAL MOLD INHIBITOR), XANTHAN GUM, ENZYMES. CONTAINS: EGG

[Login or Create an Account for Pricing & Additional Specs](#)

90gms

Per Serving	
90g	Calories from Fat 60
% Daily Value*	
Fat 7g	11%
Saturated Fat 0.5g	1%
Trans Fat 0g	
Cholesterol 0mg	0%
Sodium 480mg	20%
Carbohydrate 43g	14%
Dietary Fiber 5g	20%
Protein 8g	
Vitamin A 0% • Vitamin C 0%	
Iron 4%	
*Daily Values are based on a diet of other people's secrets.	
†Percent Daily Values are based on a diet of other people's secrets.	
Calories: 2,000 1,500	
Less than 5%	Less than 10%
Less than 20%	Less than 25%
Less than 30%	Less than 35%
Less than 40%	Less than 45%
Less than 50%	Less than 55%
Less than 60%	Less than 65%
Less than 70%	Less than 75%
Less than 80%	Less than 85%
Less than 90%	Less than 95%
Less than 100%	Less than 105%
Less than 110%	Less than 115%
Less than 120%	Less than 125%
Less than 130%	Less than 135%
Less than 140%	Less than 145%
Less than 150%	Less than 155%
Less than 160%	Less than 165%
Less than 170%	Less than 175%
Less than 180%	Less than 185%
Less than 190%	Less than 195%
Less than 200%	Less than 205%
Less than 210%	Less than 215%
Less than 220%	Less than 225%
Less than 230%	Less than 235%
Less than 240%	Less than 245%
Less than 250%	Less than 255%
Less than 260%	Less than 265%
Less than 270%	Less than 275%
Less than 280%	Less than 285%
Less than 290%	Less than 295%
Less than 300%	Less than 305%
Less than 310%	Less than 315%
Less than 320%	Less than 325%
Less than 330%	Less than 335%
Less than 340%	Less than 345%
Less than 350%	Less than 355%
Less than 360%	Less than 365%
Less than 370%	Less than 375%
Less than 380%	Less than 385%
Less than 390%	Less than 395%
Less than 400%	Less than 405%
Less than 410%	Less than 415%
Less than 420%	Less than 425%
Less than 430%	Less than 435%
Less than 440%	Less than 445%
Less than 450%	Less than 455%
Less than 460%	Less than 465%
Less than 470%	Less than 475%
Less than 480%	Less than 485%
Less than 490%	Less than 495%
Less than 500%	Less than 505%
Less than 510%	Less than 515%
Less than 520%	Less than 525%
Less than 530%	Less than 535%
Less than 540%	Less than 545%
Less than 550%	Less than 555%
Less than 560%	Less than 565%
Less than 570%	Less than 575%
Less than 580%	Less than 585%
Less than 590%	Less than 595%
Less than 600%	Less than 605%
Less than 610%	Less than 615%
Less than 620%	Less than 625%
Less than 630%	Less than 635%
Less than 640%	Less than 645%
Less than 650%	Less than 655%
Less than 660%	Less than 665%
Less than 670%	Less than 675%
Less than 680%	Less than 685%
Less than 690%	Less than 695%
Less than 700%	Less than 705%
Less than 710%	Less than 715%
Less than 720%	Less than 725%
Less than 730%	Less than 735%
Less than 740%	Less than 745%
Less than 750%	Less than 755%
Less than 760%	Less than 765%
Less than 770%	Less than 775%
Less than 780%	Less than 785%
Less than 790%	Less than 795%
Less than 800%	Less than 805%
Less than 810%	Less than 815%
Less than 820%	Less than 825%
Less than 830%	Less than 835%
Less than 840%	Less than 845%
Less than 850%	Less than 855%
Less than 860%	Less than 865%
Less than 870%	Less than 875%
Less than 880%	Less than 885%
Less than 890%	Less than 895%
Less than 900%	Less than 905%
Less than 910%	Less than 915%
Less than 920%	Less than 925%
Less than 930%	Less than 935%
Less than 940%	Less than 945%
Less than 950%	Less than 955%
Less than 960%	Less than 965%
Less than 970%	Less than 975%
Less than 980%	Less than 985%
Less than 990%	Less than 995%
Less than 1000%	Less than 1005%

Contact Us Privacy Policy Udis Gluten Free Find Udi's Near You

© 2012 Udi's Gluten Free Foods. All Rights Reserved

1600 Pearl St, Suite 300, Boulder, Co 80239 | Phone: (888) 657-1685 | Fax: (303) 657-5373