

UNCURED BEEF HOT DOGS

School Nutrition Fact Sheet

COMPANY: THOUSAND HILLS LIFETIME GRAZED
ADDRESS: 12925 PROSPERITY AVE
BECKER, MN 55308
PHONE: 612-802-9512
WEB/EMAIL: WWW.THOUSANDHILLSLIFETIMEGRAZED.COM

General Product Information

PRODUCT NAME: THOUSAND HILLS CATTLE COMPANY
PRODUCT CODE: UPC CODE:
INGREDIENT LIST: 100% GRASS FED BEEF, WATER, SEA SALT, NATURAL SPICE, CANE SUGAR, MUSTARD, PAPRIKA, CELERY JUICE, LACTIC ACID STARTER CULTURE.
PRODUCT: THESE UNCURED BEEF HOT DOGS CONTAIN NO NITRITES OR NITRATES,
DESCRIPTION: EXCEPT FOR THE NATURALLY OCCURRING NITRATES IN CELERY JUICE AND SEA SALT. THEY ARE FULLY COOKED, BUT NOT PRESERVED.
CASE WEIGHT: CASE CUBE: CASE DIMENSIONS: CASE COUNT: SERVINGS PER CASE:
LBS CUBIC FEET 80 80

Product Content

WEIGHT OF RAW/UNCOOKED/PRE-BAKED PORTION (IF APPLICABLE) 2.0 OUNCES
WEIGHT OF COOKED PORTION/SERVING SIZE 2.0 OUNCES
WEIGHT OR PERCENTAGE OF MEAT/MEAT ALTERNATE BASED ON RAW PORTION:
MEAT/POULTRY (SPECIFY TYPE, FAT CONTENT) 2.0 OUNCES
CHEESE N/A
EGGS N/A
SOY PROTEIN (SPECIFY FLOUR, CONCENTRATE OR ISOLATE) N/A
BAKED WEIGHT OF BREAD GRAIN COMPONENT N/A
WEIGHT OR PERCENTAGE OF WHOLE GRAIN OR ENRICHED FLOUR N/A
CONTRIBUTION TO SCHOOL MEAL 2.0 OZ MEAT/MEAT ALTERNATE
REQUIREMENTS PER SERVING: - N/A - GRAIN/BREAD SERVINGS
- N/A - FRUIT/VEGETABLE SERVINGS

Nutrient Content (PER SERVING): 1 Hot Dog

CALORIES (CAL)	140	DIETARY FIBER (G)	
MOISTURE (%)		PROTEIN (G)	10
ASH (%)		VITAMIN A (IU)	
FAT (G)	10	VITAMIN C (MG)	
SATURATE FAT (G):	4	CALCIUM (MG)	
CHOLESTEROL (MG)	35.0	IRON (MG)	
SODIUM (MG)	440	THIAMIN (MG)	
POTASSIUM (MG)		RIBOFLAVIN (MG)	
CARBOHYDRATES (G)	1	NIACIN (MG)	

ONE 2.0 OZ THOUSAND HILLS CATTLE COMPANY'S UNCURED BEEF HOT DOGS PROVIDES 2.0 OZ MEAT FOR THE CHILD NUTRITION MEAL PATTERN REQUIREMENTS ACCORDING TO THE FOOD BUYING GUIDE FOR SCHOOL FOOD SERVICE.

Certification Statement: I certify that the above information is true, correct and accurate.

Shawn Shoutz, Sales
Thousand Hills Cattle Company

Date 1-1-18

Uncured Beef Hot Dogs

Nutrition Facts

Serving Size: 1 Hot Dog, 2 oz. (57g)

Servings per Container: 80

Amount Per Serving

Calories 140 Calories From Fat 90

% Daily Value*

Total Fat 10g **15%**

Saturated Fat 4g **20%**

Trans Fat 0g

Cholesterol 35mg **12%**

Sodium 440mg **18%**

Total Carbohydrate 1g **0%**

Protein 10g

Calcium 0% • Iron 6%

Not a significant source of trans fat, dietary fiber, sugars, vitamin A, vitamin C and calcium.

*Percent Daily Values are based on a 2,000 calorie diet.



Product Information

Item requested: All beef hot dog

Manufacturer item #: 18351

Size: 2 ounce

Case size: 80/ 2 ounce (2-5 lb. bags per case)

Case weight: 10 lbs.

Cases per pallet: 45

Distribution: Open

Thousand Hills Contact: Shawn Shoutz - 763-262-3404

Product Highlights:

- 100% grass fed beef
- No nitrates
- No MSG
- Gluten free
- Lower fat than traditional hog dogs
- Good source of Omega 3's
- Good source of CLA's (aids in cancer prevention)
- Produced from family farms in the Midwest
- GMO Free

Meal Contribution: 1 - 2 ounce dog = 2 Meat/Meat Alternate



Gluten Free Hot Dog Bun I/W

Product Specifications:

DI Code	DOT Code	UPC	Pack Size	Case Dimension	Net. Weight	Gross Weight	Cube	Cases Pallet
300154	544550	03007403001549	24 / 3.5 oz.	10.75 x 10.75 x 5.75	5.3	5.9	0.38	120
Length	Width	Height	Diameter	TL X HI	Shelf Life	Storage Temp		
6"	2 1/4"	1 1/2"		12 x 10	180 Days	Frozen		

Nutrition Facts

Serving Size 1 Roll (113g)
Servings Per Container 24

Amount Per Serving
Calories 250 Calories from Fat 25

	% Daily Value*
Total Fat 3g	5%
Saturated Fat 0g	0%
<i>Trans</i> Fat 0g	
Cholesterol 0mg	0%
Sodium 410mg	17%
Total Carbohydrate 59g	20%
Dietary Fiber 9g	36%
Sugars 4g	

Protein 4g

Vitamin A 0% • Vitamin C 0%
Calcium 8% • Iron 6%

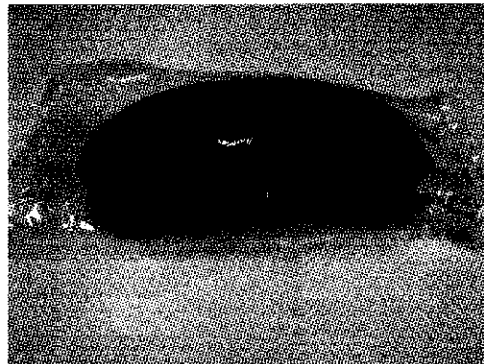
*Percent Daily Values are based on a 2,000 calorie diet. Your daily values may be higher or lower depending on your calorie needs:

	Calories:	2,000	2,500
Total Fat	Less than	65g	80g
Sat Fat	Less than	20g	25g
Cholesterol	Less than	300mg	300mg
Sodium	Less than	2,400mg	2,400mg
Total Carbohydrate		300g	375g
Dietary Fiber		25g	30g

Ingredients:

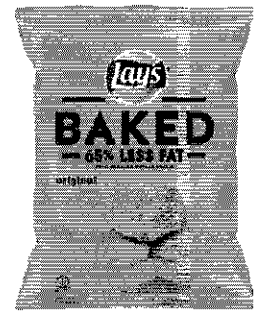
Water, Brown Rice Flour, corn starch, tapioca starch, eggs, corn dextrin, sugar, canola oil, honey, potato flour, baking powder, yeast, rice bran, xanthan gum, salt, vinegar, enzymes (Calcium Sulfate & Enzymes).

Allergens: Egg



Cooking Instructions:

Allow bread to thaw for two hours.



Baked Lay's® Original Potato Crisps – .875 oz. (24.8 g)

Nutrition Facts	
1 Serving per container	
Servings Size	1 package
Amount per serving	
Calories	110
	%Daily Value*
Total Fat 3g	4%
Saturated Fat 0g	2%
Trans Fat 0g	
Polyunsaturated Fat 1.5g	
Monounsaturated Fat 1g	
Cholesterol 0mg	0%
Sodium 140mg	6%
Total Carbohydrate 19g	7%
Dietary Fiber 1g	4%
Total Sugars 2g	
Includes 1g Added Sugars	3%
Protein 2g	
Vitamin D 0mcg	0%
Calcium 5mg	0%
Iron 0mg	0%
Potassium 197mg	4%
*The % Daily Value (DV) tells you how much a nutrient in a serving of food contributes to a daily diet. 2,000 calories a day is used for general advice.	

Ingredients:

Dried Potatoes, Corn Starch, Corn Oil, Sugar, Sea Salt, Soy Lecithin, Dextrose and Annatto Extracts.

CONTAINS A SOY INGREDIENT.

Case UPC	000-28400-33625-3
Bag UPC	0-28400-04701-2
Case Pack	60/.875 oz. bags
USDA Smart Snack Compliant	Yes- Vegetable first ingredient
Kosher	Not Kosher
Grain – oz. eq.	n/a
Weight of Grain	n/a
Document Updated	8/17

I verify all information is accurate as of 8/29/17.

Jan Ruegg
Jan Ruegg

PepsiCo Foodservice/Vend Nutrition Science
972-334-2165

Frito-Lay Inc.
Plano, TX 75024-409



GLUTEN FREE

*Bag image is tentative and will be updated to include front of pack calories

All products are accurately labeled with the most current information however, since the ingredients are subject to change, we recommend you check the label on the specific product for the most current and accurate information.