



Gluten Free Cheese Pizza

Product Specifications:

DI Code	DOT Code	UPC	Pack Size	Case Dimension	Net Weight	Gross Weight	Cube	Cases/Pallet
300151	542958	03007456710009	24 / 6.7 oz.	10.75 x 10.75 x 5.75	10	10.4	0.38	120

Length	Width	Height	Diameter	TL X HL	Shelf Life	Storage Temp
			6"	12 x 10	180 Days	Frozen

Nutrition Facts

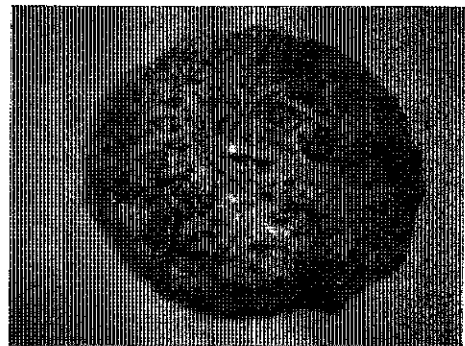
Serving Size 7 oz (198g)
Servings Per Container 1

Amount Per Serving	
Calories 480	Calories from Fat 180
	% Daily Value*
Total Fat 21g	32%
Saturated Fat 9g	43%
<i>Trans Fat</i> 0g	
Cholesterol 45mg	15%
Sodium 370mg	15%
Total Carbohydrate 59g	20%
Dietary Fiber 3g	11%
Sugars 1g	
Protein 13g	
Vitamin A 8%	Vitamin C 0%
Calcium 35%	Iron 6%
* Percent Daily Values are based on a 2,000 calorie diet. Your daily values may be higher or lower depending on your calorie needs.	
	Calories 2,000 2,500
Total Fat	Less than 65g 80g
Sat Fat	Less than 20g 25g
Cholesterol	Less than 300mg 300mg
Sodium	Less than 2,400mg 2,400mg
Total Carbohydrate	300g 375g
Dietary Fiber	25g 30g
Calories per gram:	
Fat 9	Carbohydrate 4 Protein 4

Ingredients:

Crust: Rice flour, water, tapioca flour, potato flour, olive oil, sugar, fresh yeast, salt, xanthan gum. Cheese: Mozzarella cheese (pasteurized milk, cultures, salt, enzymes), modified food starch, powdered cellulose (added to prevent caking), nonfat milk, whey protein concentrate, Cheddar cheese (pasteurized milk, cultures, salt enzymes), Provolone cheese (pasteurized milk, cultures, salt, enzymes), sodium citrate, annatto. Sauce: Crushed tomatoes (water, concentrated crushed tomatoes), tomato puree (water, tomato paste), sugar, salt, spice, soybean oil, citric acid, dehydrated onions, garlic, Romano cheese flavor (romano cheese (milk, cheese cultures, salt, enzymes, calcium chloride), water, disodium phosphate), onion powder.

Allergens: Milk, Soy



Cooking Instructions:

Preheat oven to 400°. Remove all film packaging and place pizza on a baking sheet. Place on the middle rack of the oven and cook for 12-15 minutes. Let cool for 3-4 minutes.